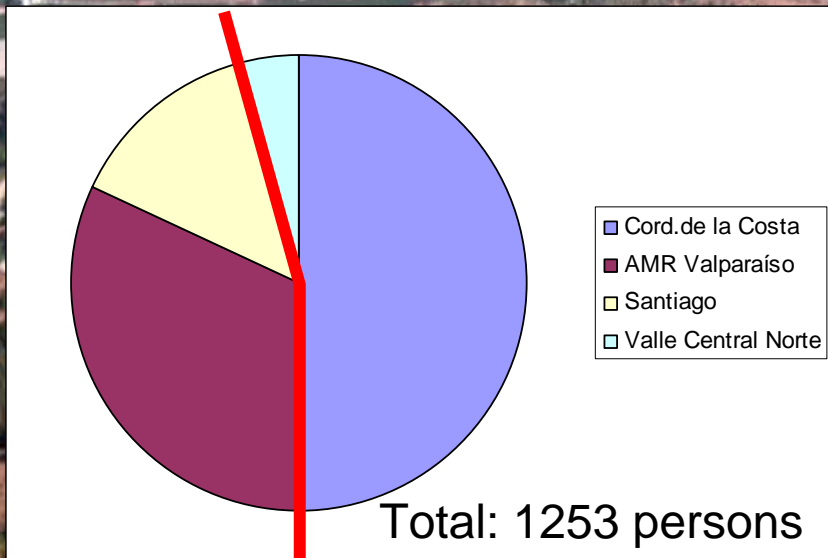




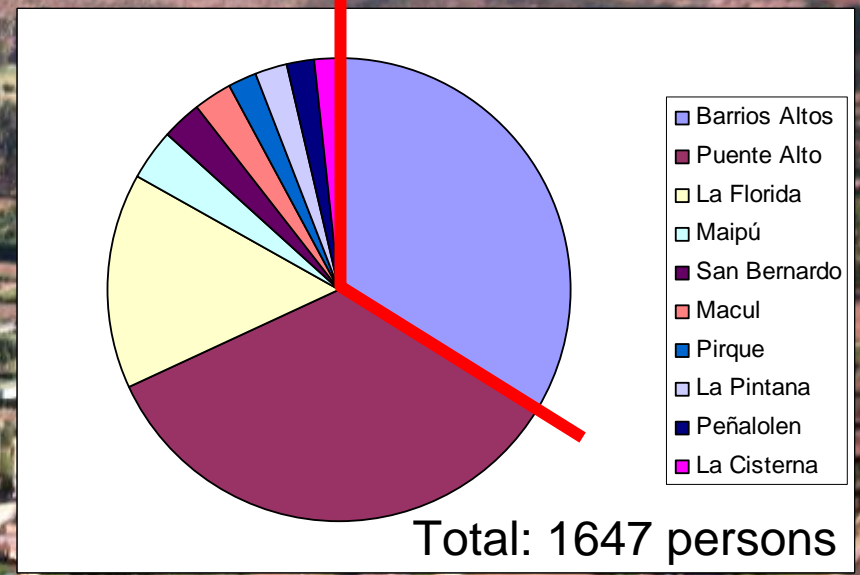
Olmué

# 6. Intensity and dynamics

Origins of Immigrants to Olmué  
1992-2002



Origins of Immigrants to San José  
de Maipo 1992-2002





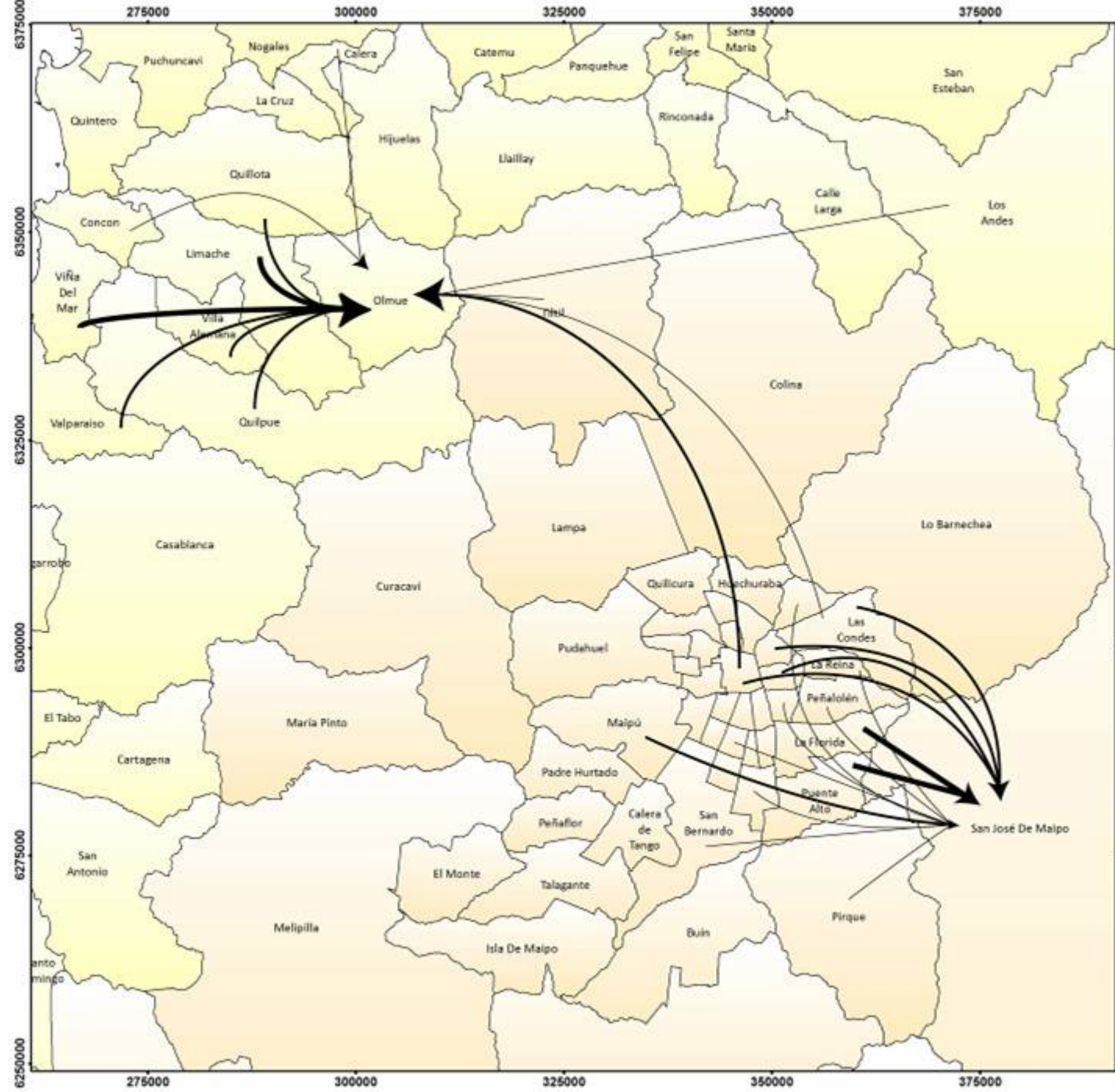
# Permanent immigration to Olmué and San José del Maipo 1997-2002

## Legend

- Región de Valparaíso
- Región Metropolitana

## migration

- 25-50 persons
- 51-200 persons
- 201-567 persons



6375000  
6350000  
6325000  
6300000  
6275000  
6250000

375000  
350000  
325000  
300000  
275000

900000

310000

6350000

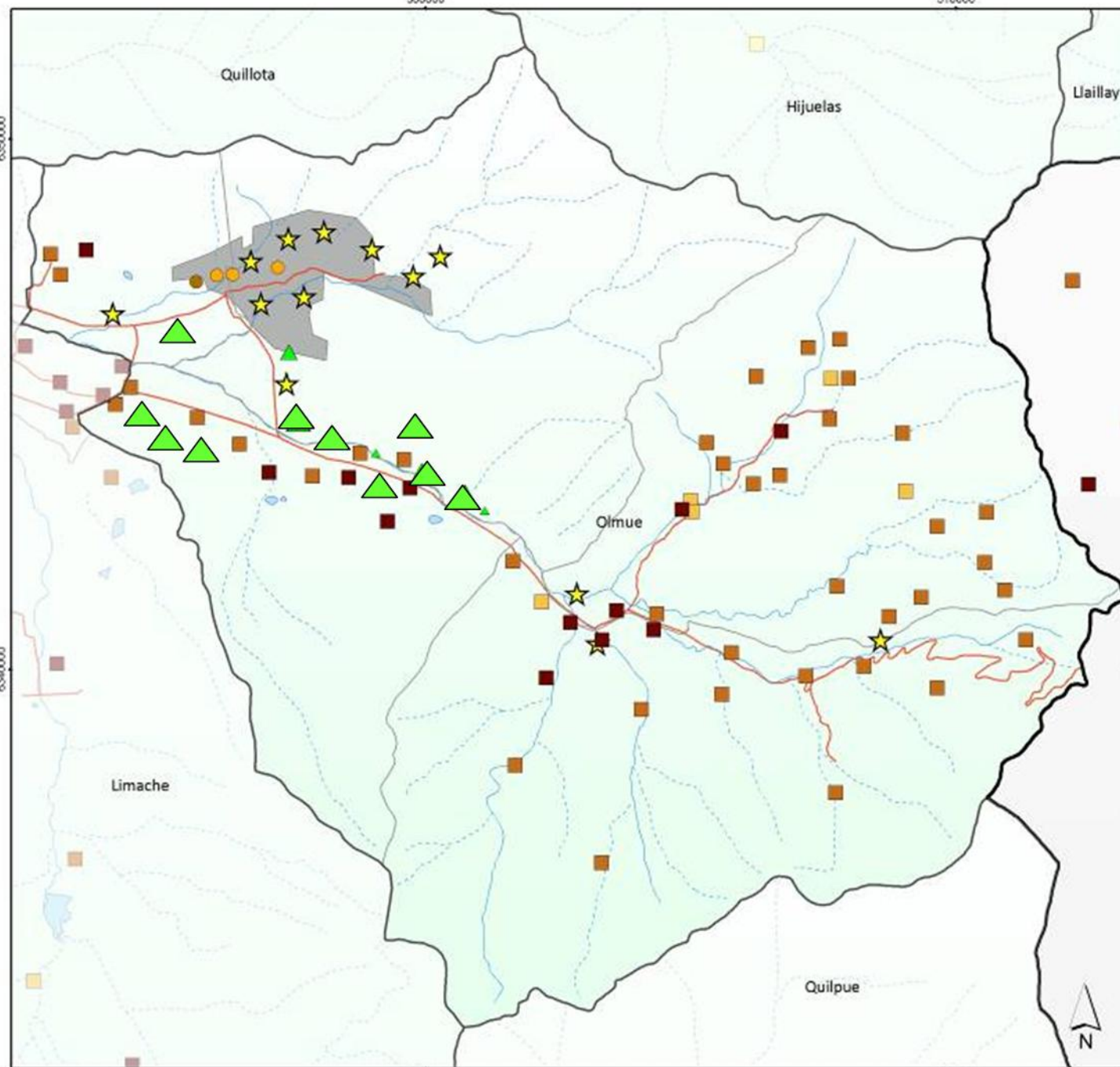
6350000

6340000

6340000

300000

310000



## Comuna de Olmué

### Región de Valparaíso

#### Legend

#### HDI in villages



#### Pleasure lot parks

#### (ha)

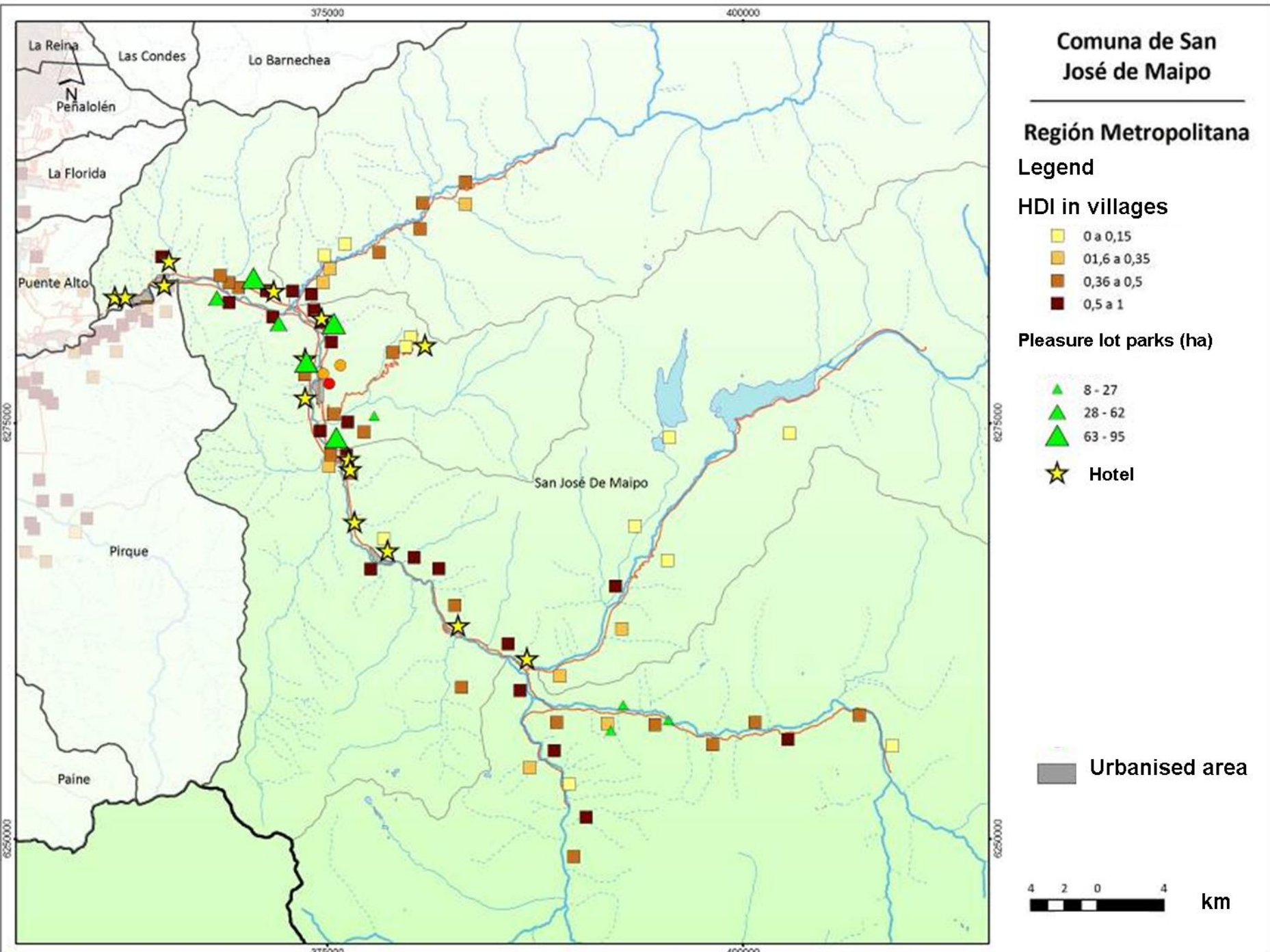


Urbanised area

2,5 1,25 0 2,5

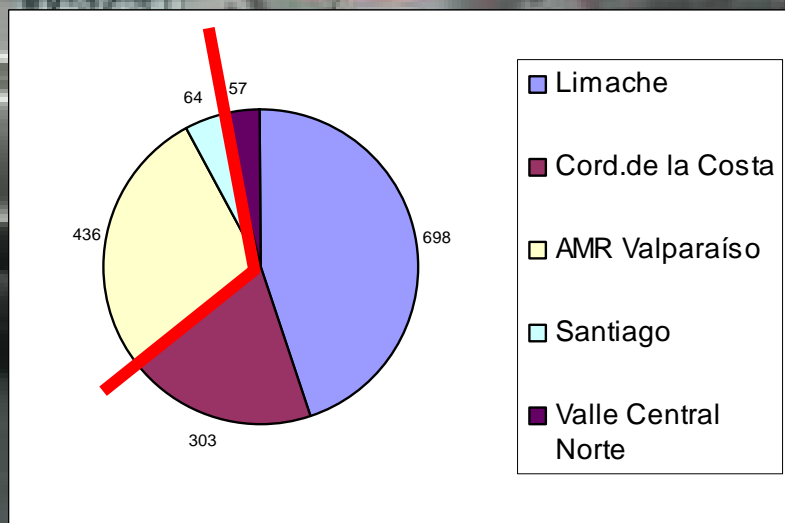
km



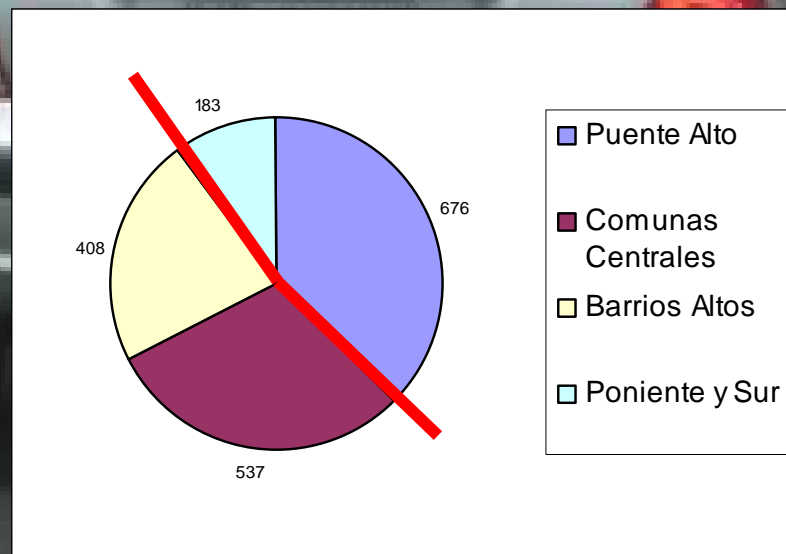


# Commuting

Daily commuters from Olmué in 2002 to....



Daily commuters from San José del Maipo in 2002 to....



Total: 1558 persons from 4008 working persons (39 %). Amenity migrants: 36 % of total commuters

Total: 1804 persons from 4547 working persons (40 %). Amenity migrants: 52 % of total commuters

# Estimation of share of amenity migrants in total population 2002

Community	Population 2002	Amenity Migrants 1992-2002	Share (%)
Olmué	7139	500	7,0
San José del Maipo	6947	947	13,6

Cajón del Maipo

# 7. Motives

## **Motivators:**

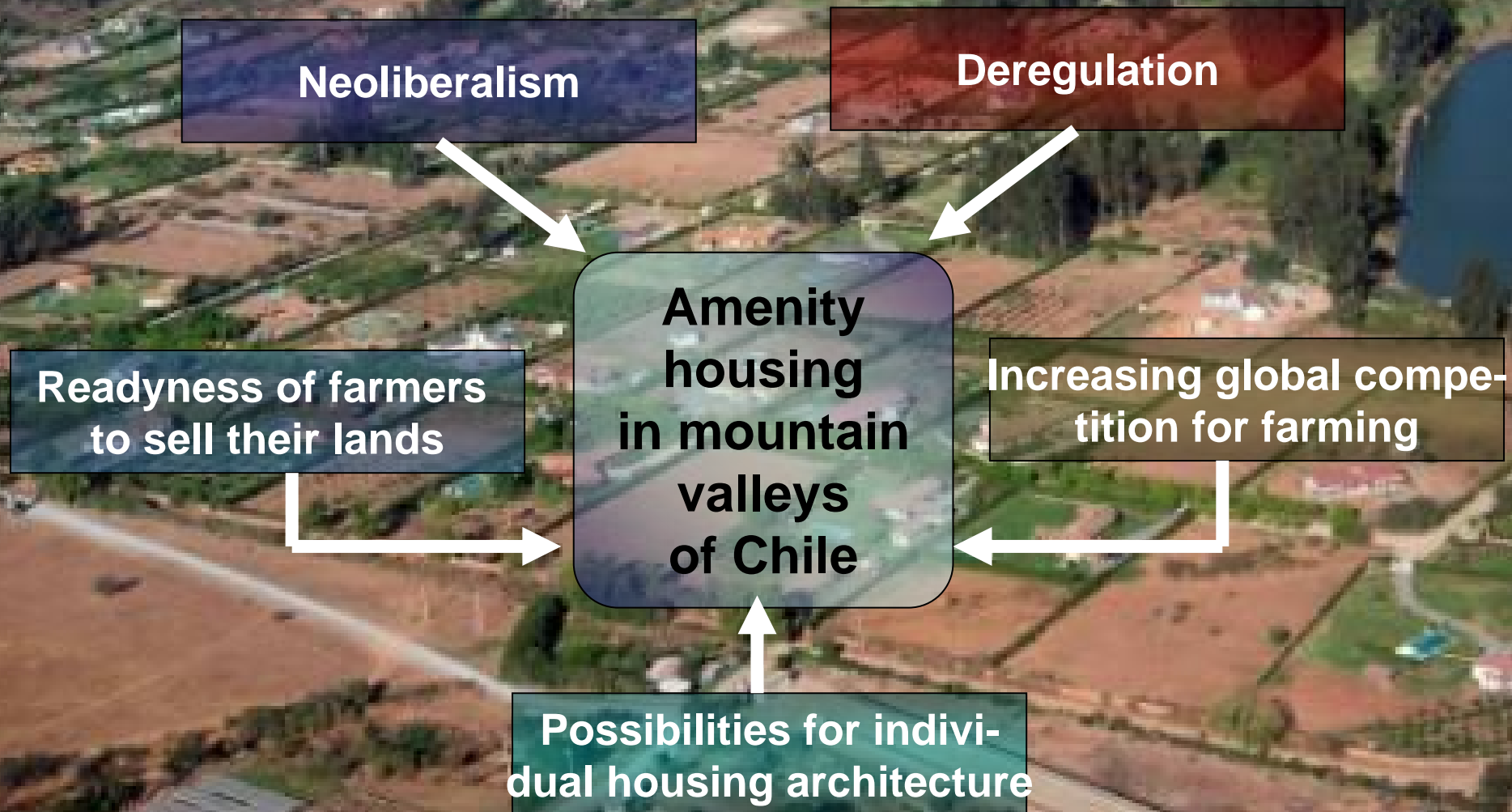
- Quality of life
- Microclimate
- Silence, absence of noise
- Safety, security
- Rural life
- Mountain Scenery

## **Facilitators:**

- Accessibility
- ICT-Communication
- Wealth
- Land availability
- Reduced socio-spatial rootedness
- Comfort amenities

Elderly people come mainly because of the microclimate, which diminishes effects of rheuma and arthritis.

# Framework conditions



# 8. Assessment

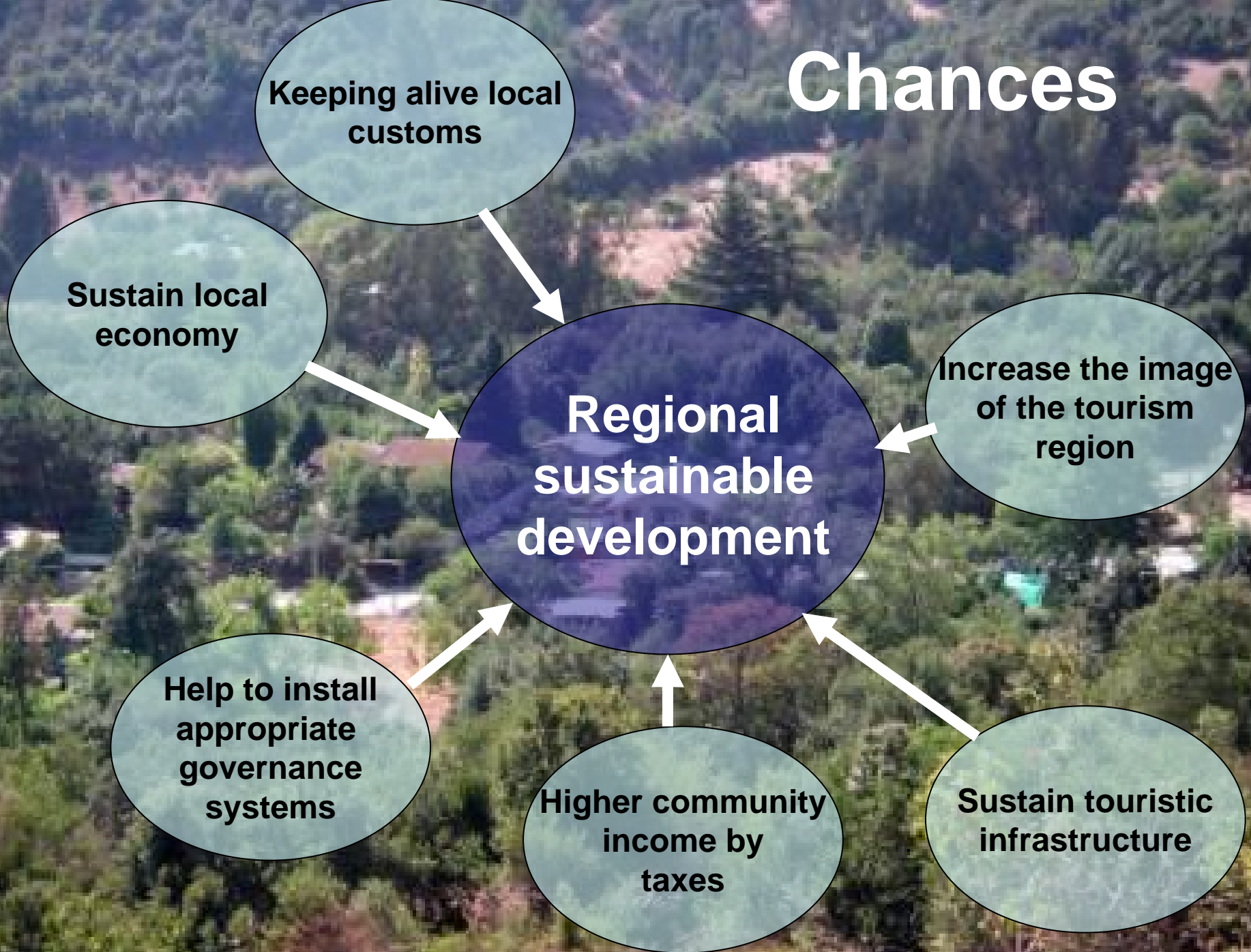
- Job creation (second homes need care-keepers, gardening etc.; jobs also in construction and services)
- Buying power and taxes for the community and the local commerce
- Stop of the rural-exodus
- Image-elevation of the community

**positive**

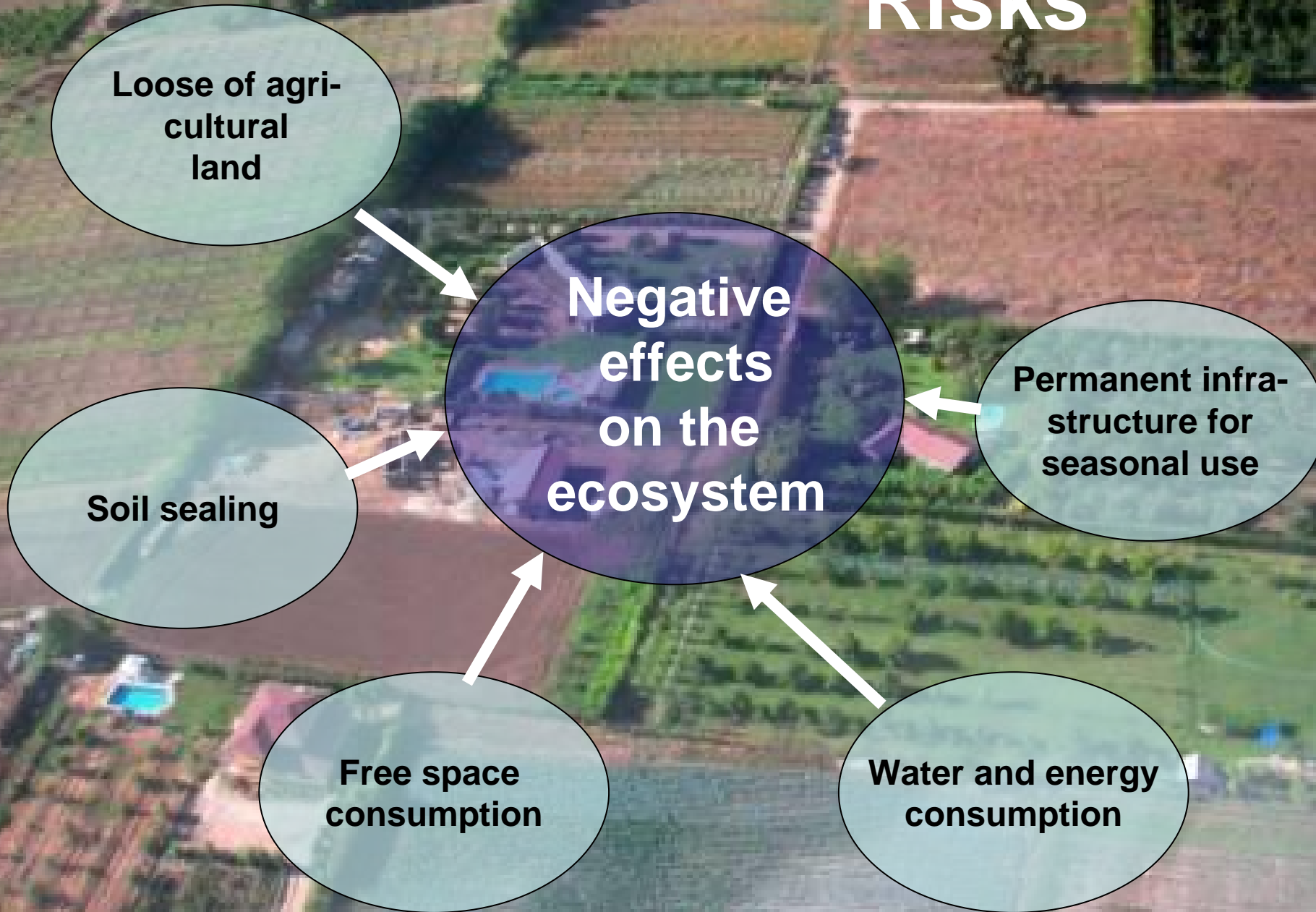
- no urban development concept
- lack of visions for the future
- desintegrated and disharmonic urban structures
- little integration of the immigrants, conflicts
- high costs of infrastructure
- no initiatives for social housing

**negative**

# Chances



# Risks





**Thank you for listening!**