

The Challenges and Opportunities of Amenity-Led Migration in the Yellowstone to Yukon Landscape

by Wendy Francis
Senior Conservation Program
Manager

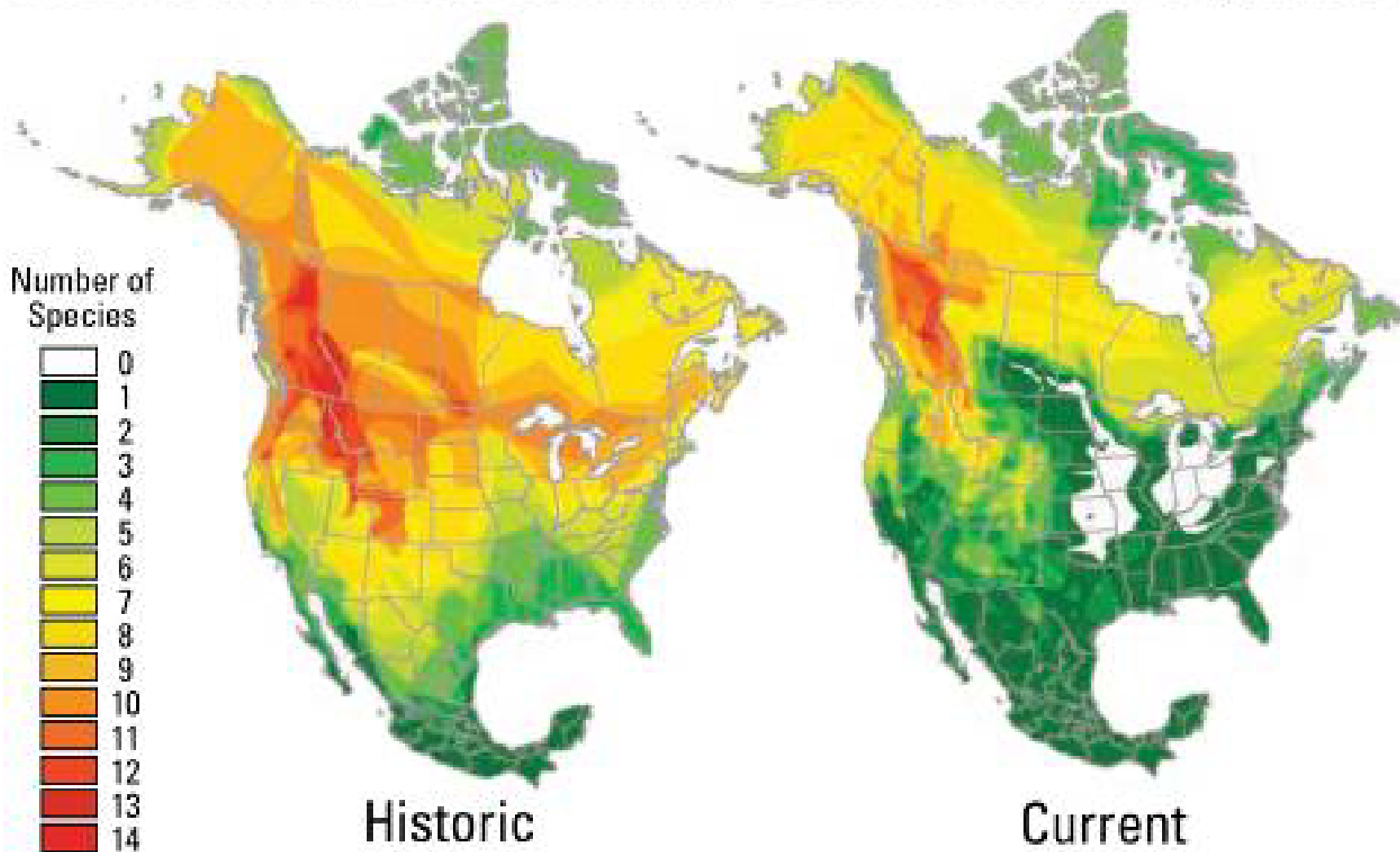
May 17, 2008



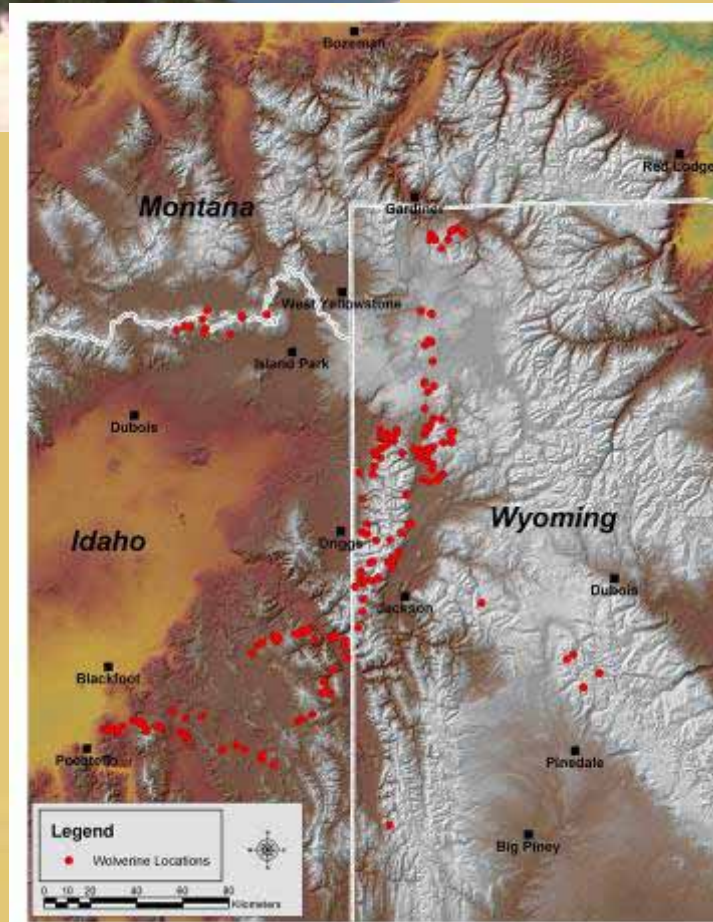
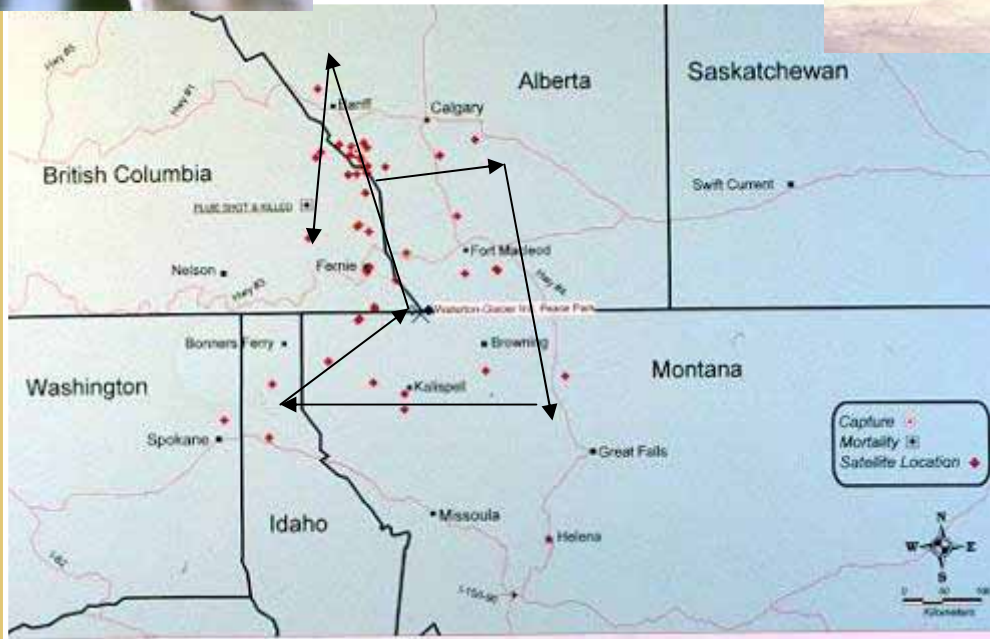
Yellowstone To Yukon Ecoregion with Elevations



Historic and Current Distribution of Carnivores and Ungulates



Source - Range Contractions of North American Carnivores and Ungulates - Andrea S. Laliberte and William J. Ripple









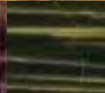
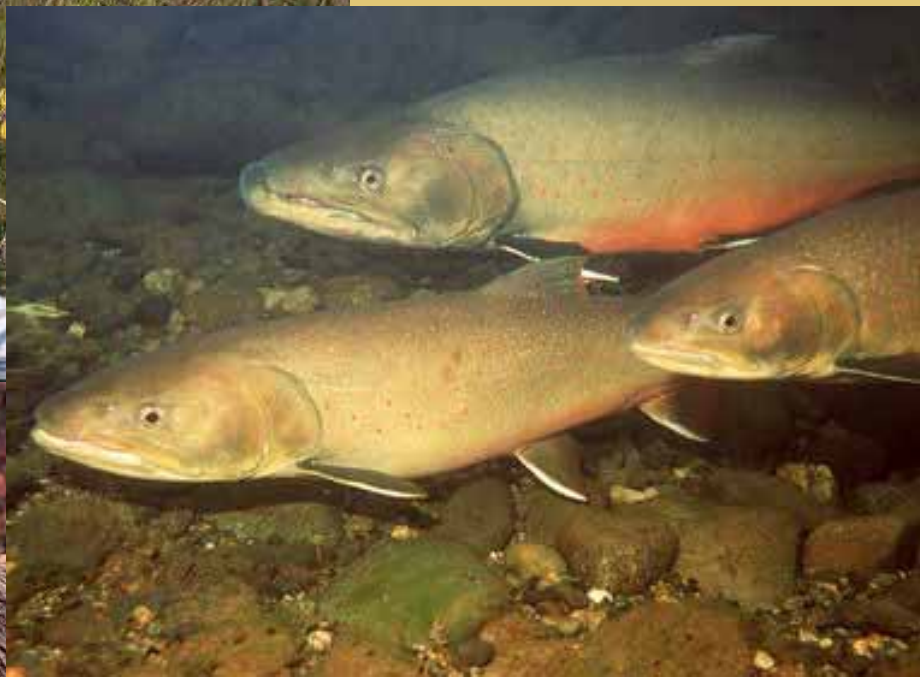
Big Sky Conservation Institute GIS

Y2Y's Mission

Combining science and stewardship, we seek to ensure that the world-renowned wilderness, wildlife, native plants, and natural processes of the Yellowstone to Yukon region continue to function as an interconnected web of life, capable of supporting all of its natural and human communities, for current and future generations.

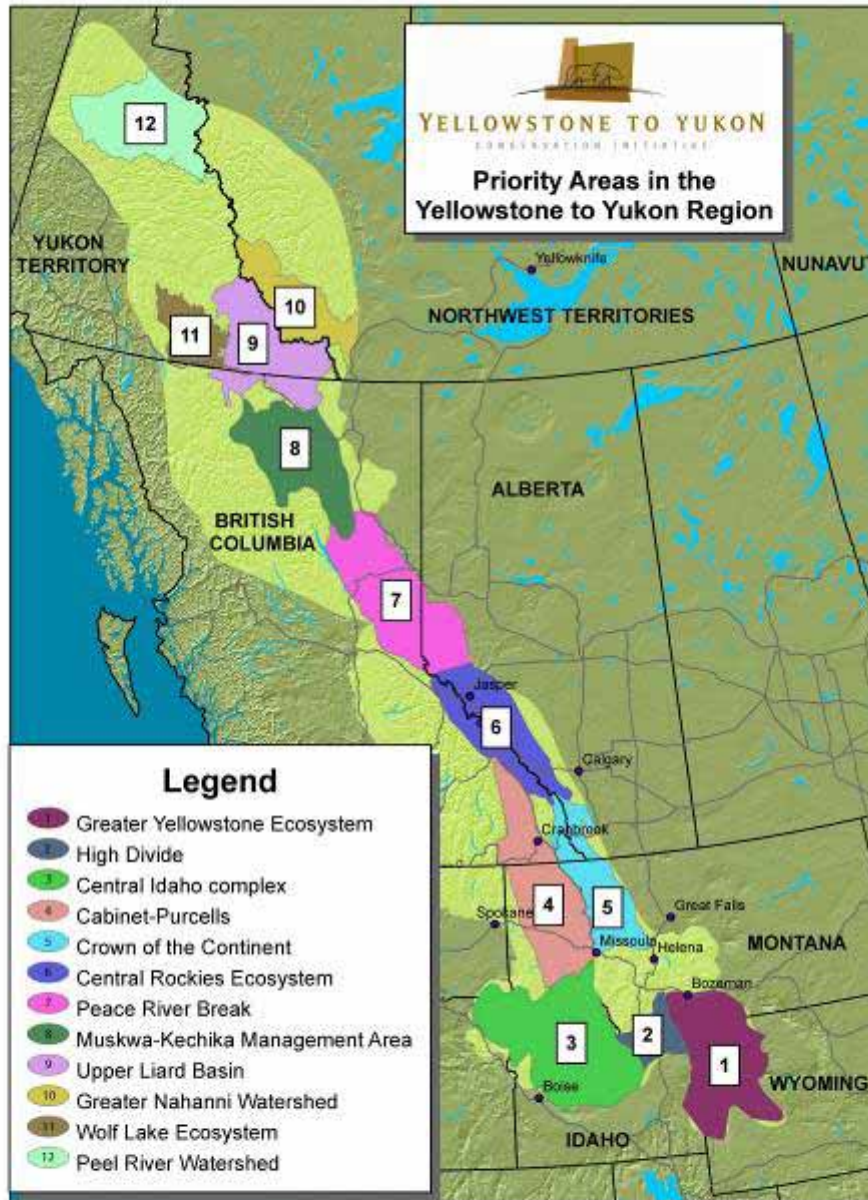


How does Y2Y work?



YELLOWSTONE TO YUKON

Priority Areas for Conservation Action in the Yellowstone to Yukon Landscape





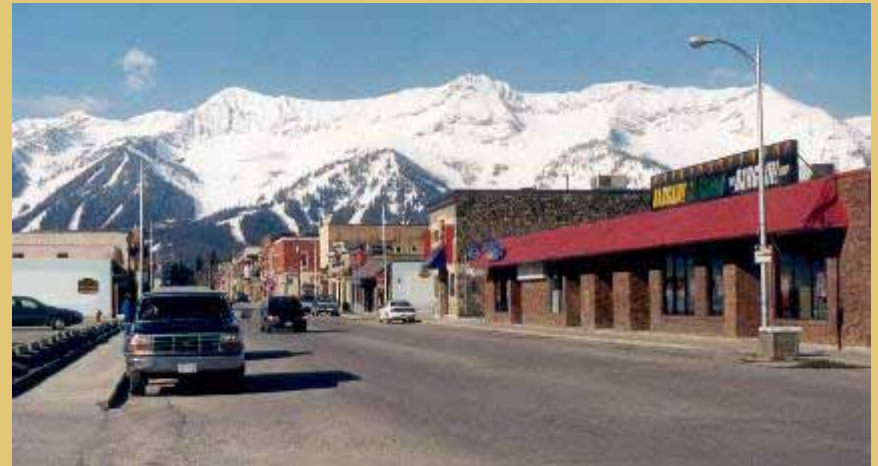
Role of Amenity-Led Communities in the Y2Y Landscape

- Mindful of context of landscape-scale conservation (e.g., Y2Y)
- Understand impacts of municipal decision-making on landscape integrity
- Implement best practices



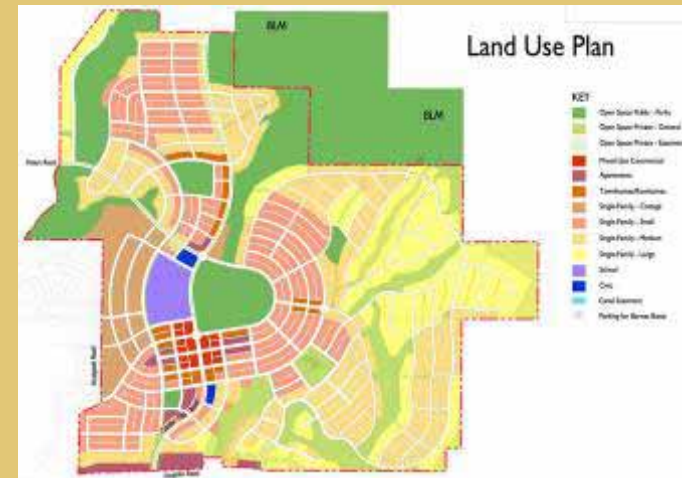
Spheres of Municipal Decision-making

- Land use planning and zoning
- Wildlife movement corridors
- Waste/attractants management
- Growth management
- Water protection
- Public outreach and education



Land Use Planning and Zoning

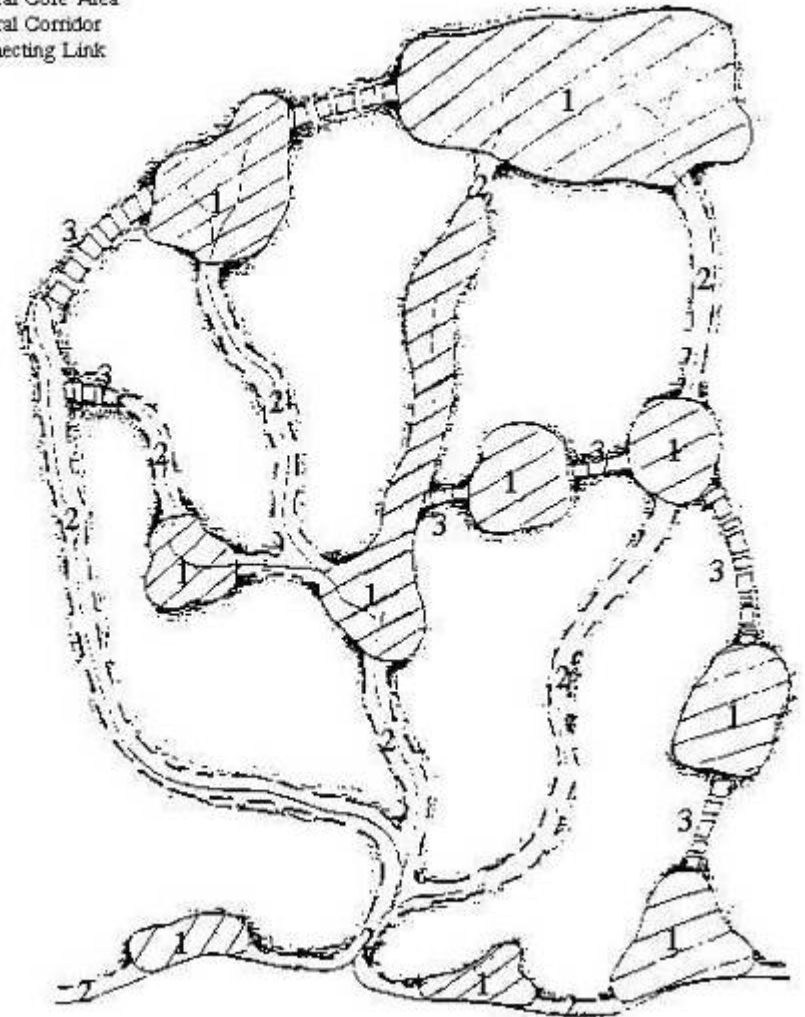
- Vision
- Community land use plans
- Land use zones
- Development decisions
- Environmental assessment



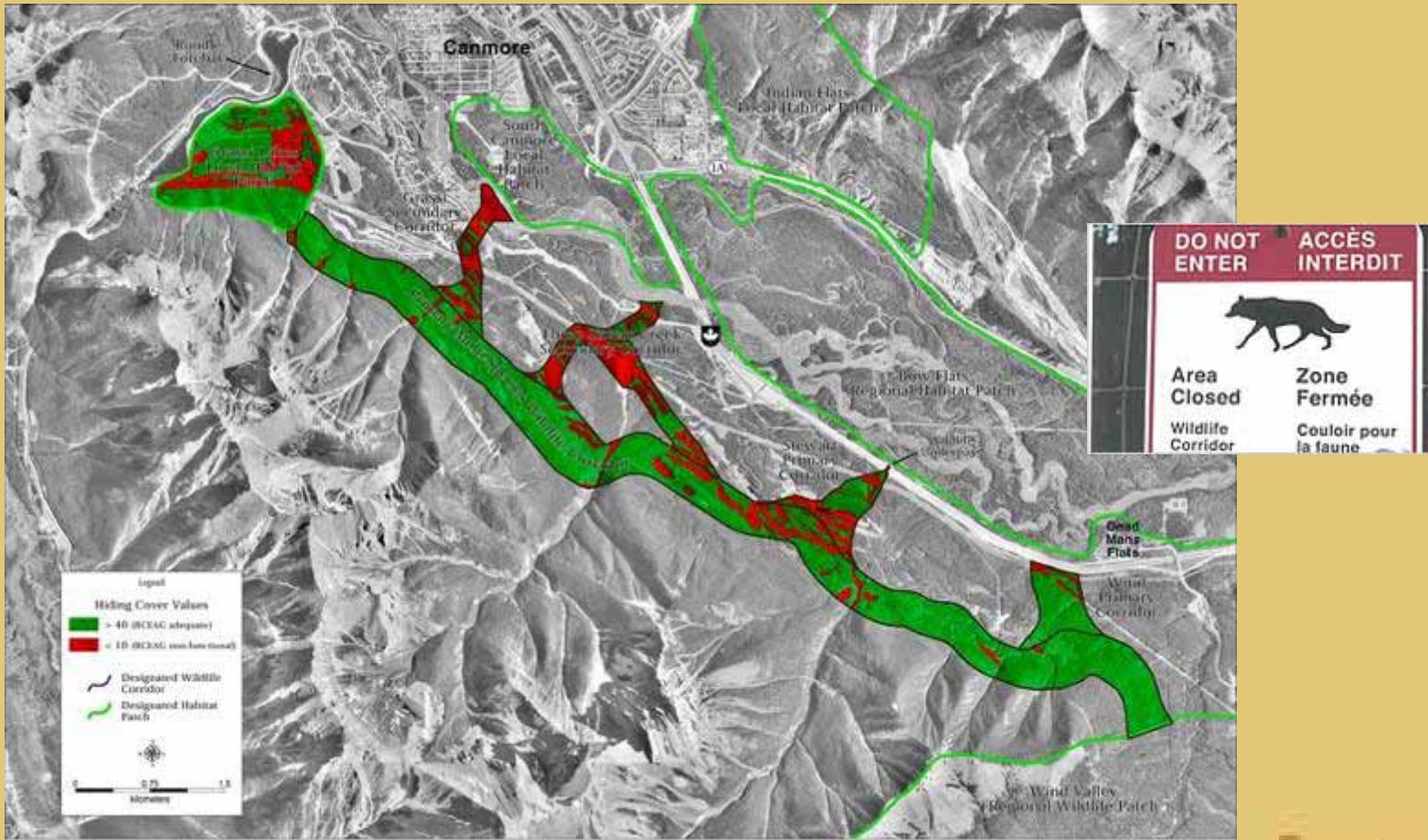
Natural Heritage Protection



- Human Dominated Area
- ▨ NATURAL HERITAGE SYSTEM
 - 1. Natural Core Area
 - 2. Natural Corridor
 - 3. Connecting Link



Wildlife Movement Corridors



Map 4: BCEAG Hiding Cover Analysis with Proposed and Existing Fairway Development

Scott Jevons / GEOWORKS

Waste/Attractants Management

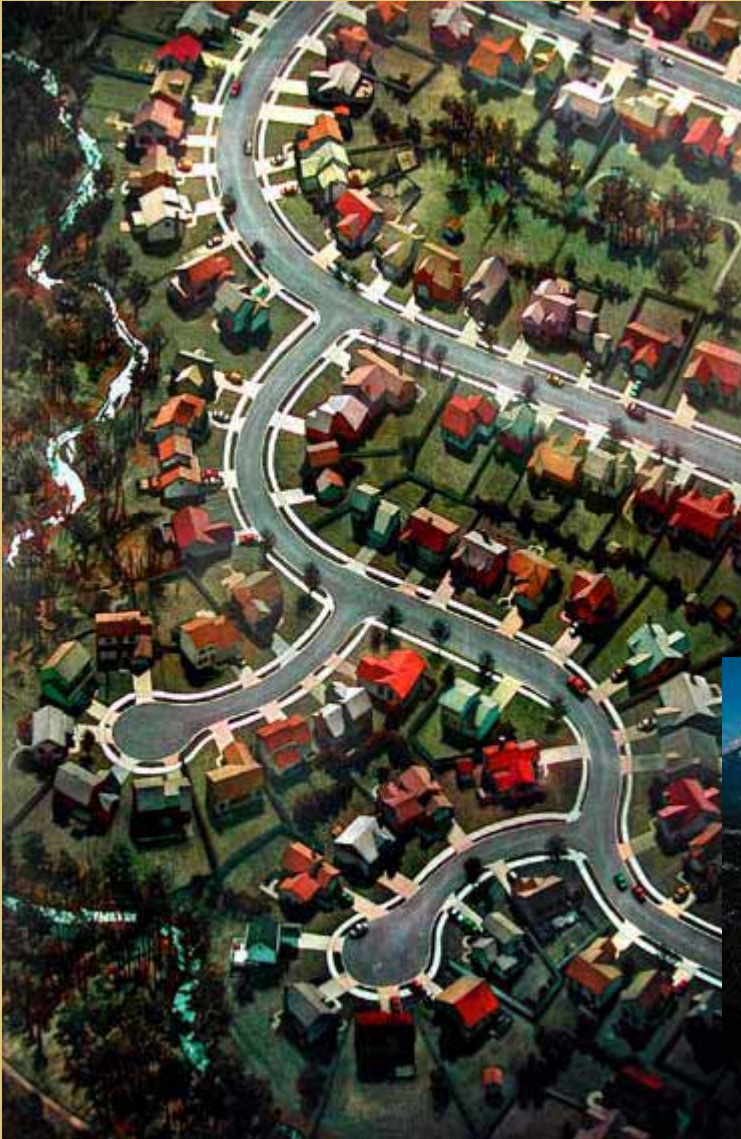


Water Source Protection



YELLOWSTONE TO YUKON

Growth Management



YELLOWSTONE TO YUKON

Public Outreach and Engagement



YELLOWSTONE TO YUKON



YELLOWSTONE TO YUKON



TM

YELLOWSTONE TO YUKON

CONSERVATION INITIATIVE

**1240 Railway Ave,
Unit 200
Canmore, Alberta
Canada T1W 1P4
Tel: 403-609-2666**

**P.O. Box 1477
Banff, Alberta
Canada T1L 1B4
Tel: 403-763-8633**

**503 W. Mendenhall
Street
Bozeman, Montana
USA 59715
Tel: 406-582-7840**

info@y2y.net

wendy@y2y.net

www.y2y.net



YELLOWSTONE TO YUKON