



RURAL FUTURES

Associates in Rural Community Development

Migrating Through Energy Uncertainties



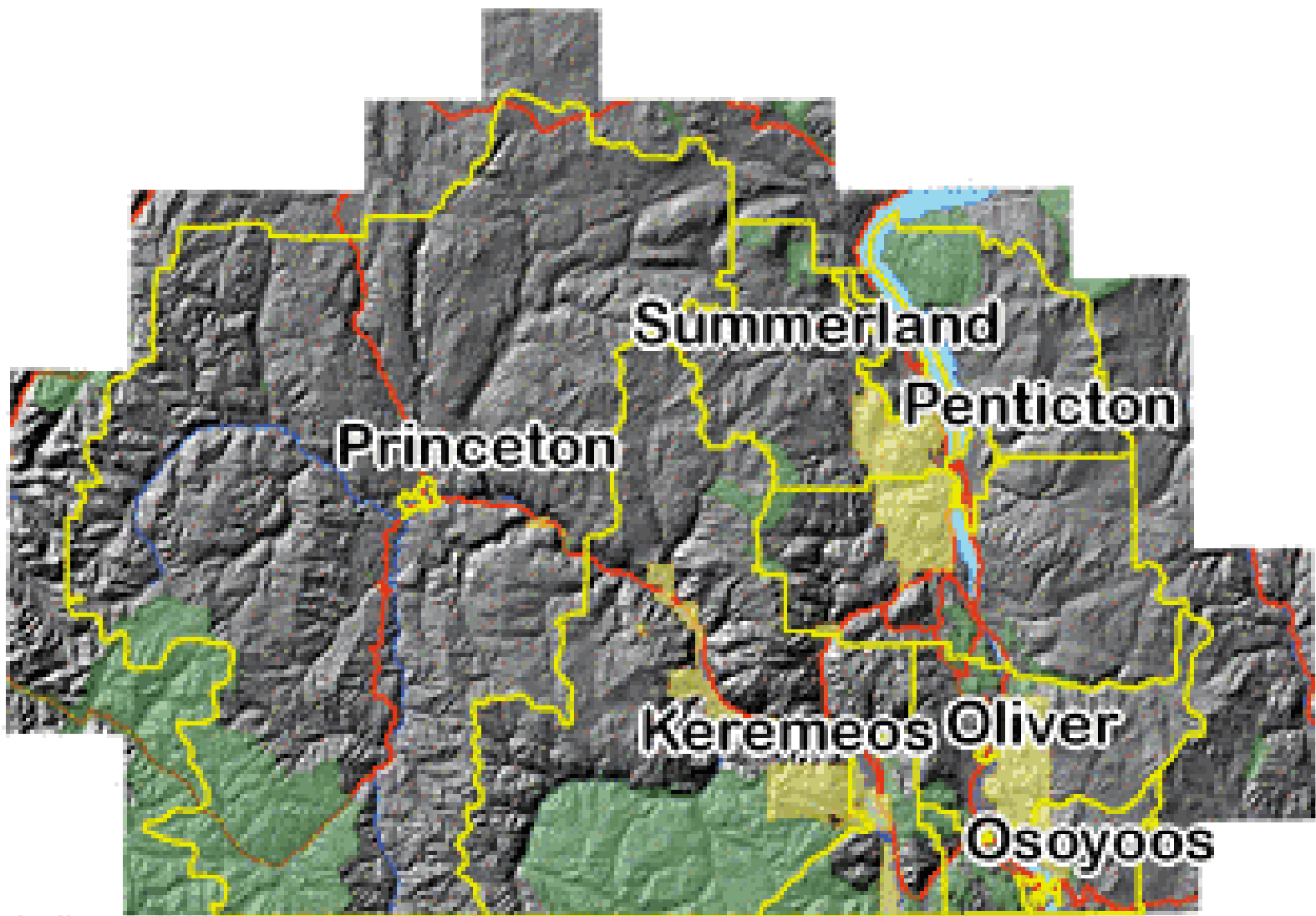
*Healthy Landscapes
Healthy Economies
Healthy Communities*

RURAL FUTURES

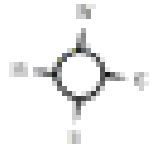
Associates in Rural Community Development

The People Industry

- Driver of development
- Pay taxes, buy goods and services
- Create jobs, diversify economy
- Put a value on the conservation of landscapes
- Add social capital
- Inflationary pressure, urbanization of landscapes, dark homes, rebel against the idyllic culture that attracted them, impact on best use of land



Regional District of Okanagan-Similkameen





*Healthy Landscapes
Healthy Economies
Healthy Communities*

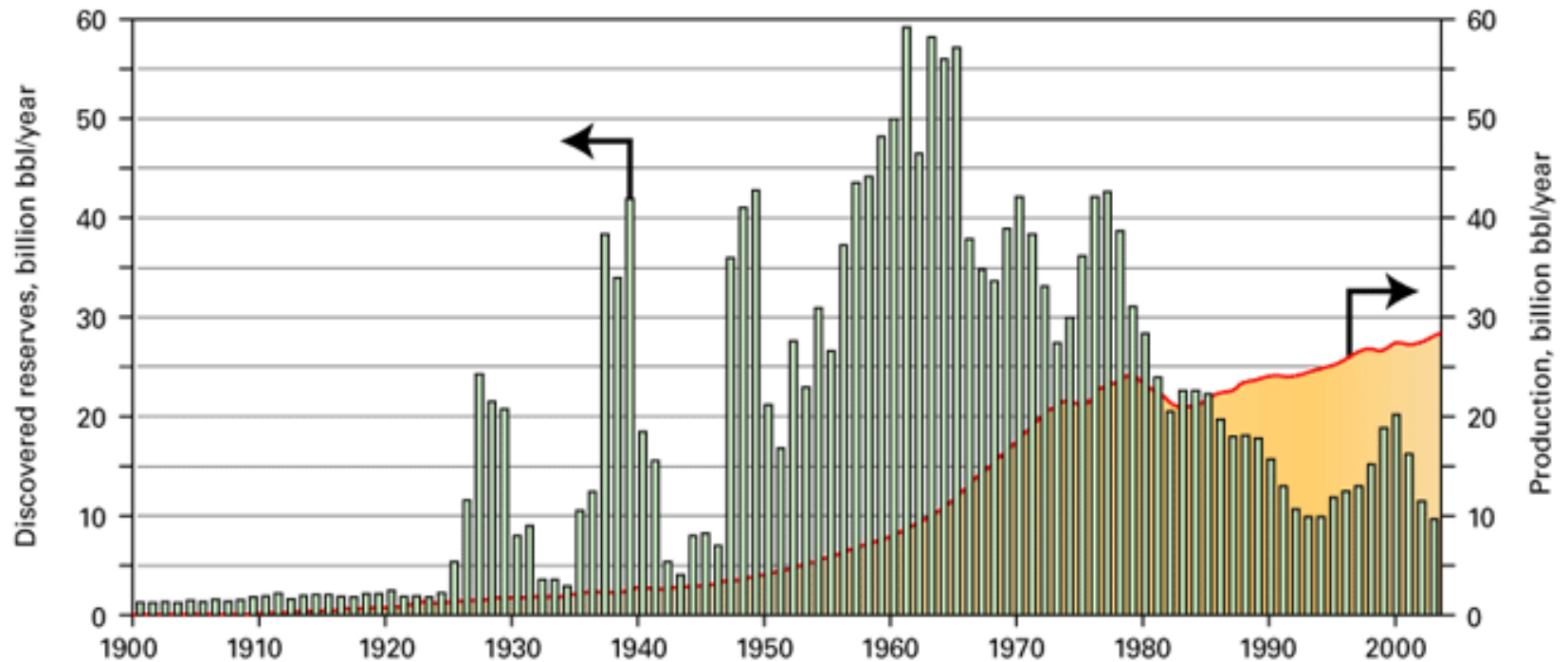
Associates in Rural Community Development

Mantra

Whether it be due to voluntary reductions, or social pressure or carbon output regulations, or high price, or scarcity, we will be using less oil (and natural gas) in the future.

BACKDATED OIL DISCOVERIES

Fig. 3



Source: Reference 6



Healthy Landscapes
Healthy Economies
Healthy Communities

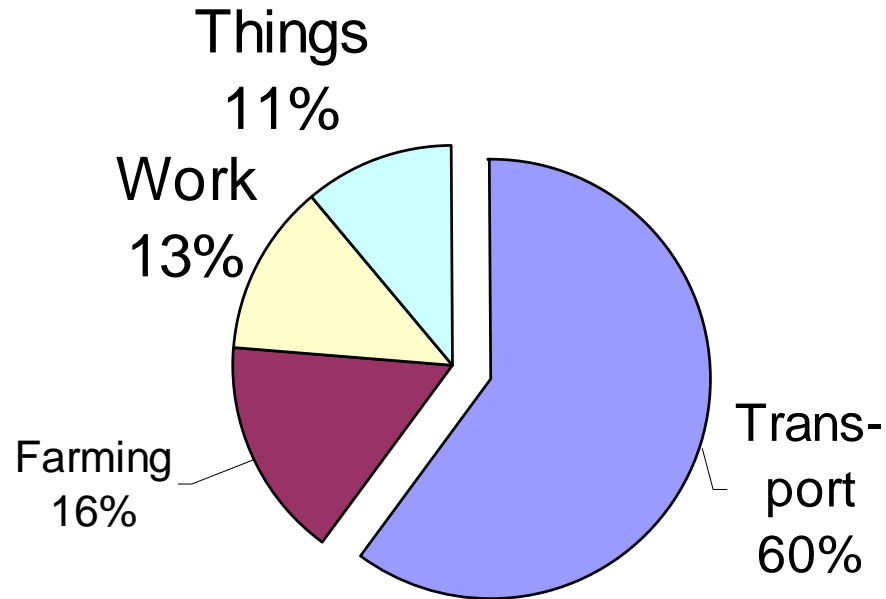
RURAL FUTURES

Associates in Rural Community Development

Peak Predictions

organization	year
U.S Dept. of Energy: Energy Information Administration	2037
International Energy Agency	2030
PFC Energy, Washington based consulting firm, consultant to V.P. Dick Cheney	2020
British Petroleum	2019
Institute for Geosciences and Resources: Gov't of Germany	2017
General Directorate of Energy and Raw Materials: Gov't of France	2013 to 2023
Energyfiles: private oil industry consultant	2016
Jean Laherrere: former head of exploration for Total	2015
Chris Skrebowski: editor of <i>Petroleum Review</i>	2011
Colin Campbell; former oil company engineer; founder of ASPO	2010
Matthew Simmons, oil industry financier	2006

Oil Uses





*Healthy Landscapes
Healthy Economies
Healthy Communities*

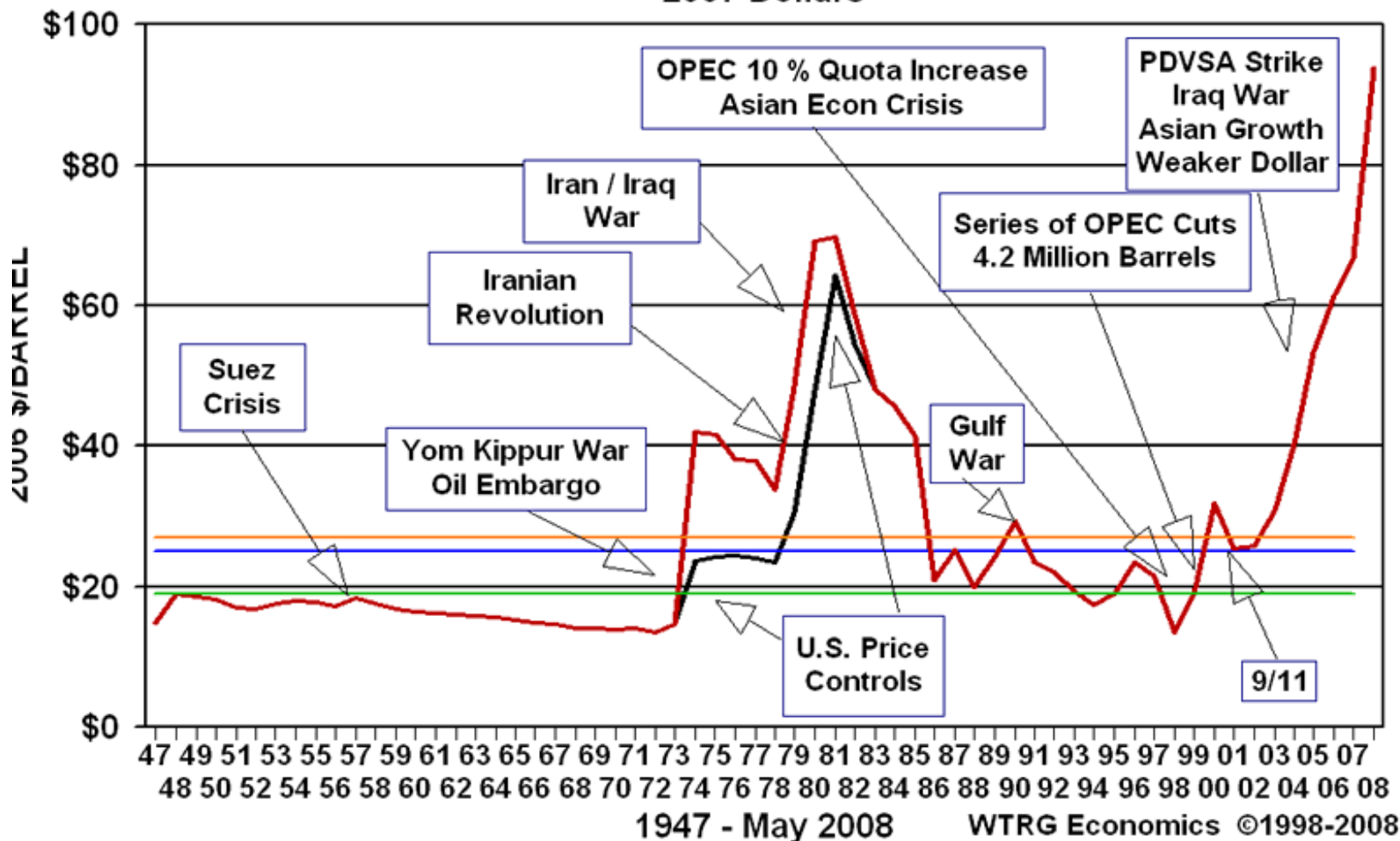
RURAL FUTURES

Associates in Rural Community Development

Energy Trend Scenario - 2015

- 5% lessons: 1973 and 1979
- Oil prices doubled each time
- 6.8% and 5.3% decline in U.S. GDP
- Unemployment, stagflation
- Energy = Wealth
- Population, food production, wealth, energy consumption on similar trajectories
- Price rises in anticipation of peak: expect doubling rate to speed up
- Peak, plateau (grace period), decline

Crude Oil Prices 2007 Dollars





*Healthy Landscapes
Healthy Economies
Healthy Communities*

RURAL FUTURES

Associates in Rural Community Development

Howdy Neighbour





The Urban Cottage



Osoyoos Lake North



Proximity to Skaha Lake and Kettle Valley Railway Trail



*Healthy Landscapes
Healthy Economies
Healthy Communities*

RURAL FUTURES

Associates in Rural Community Development

Anybody There?





*Healthy Landscapes
Healthy Economies
Healthy Communities*

RURAL FUTURES

Associates in Rural Community Development

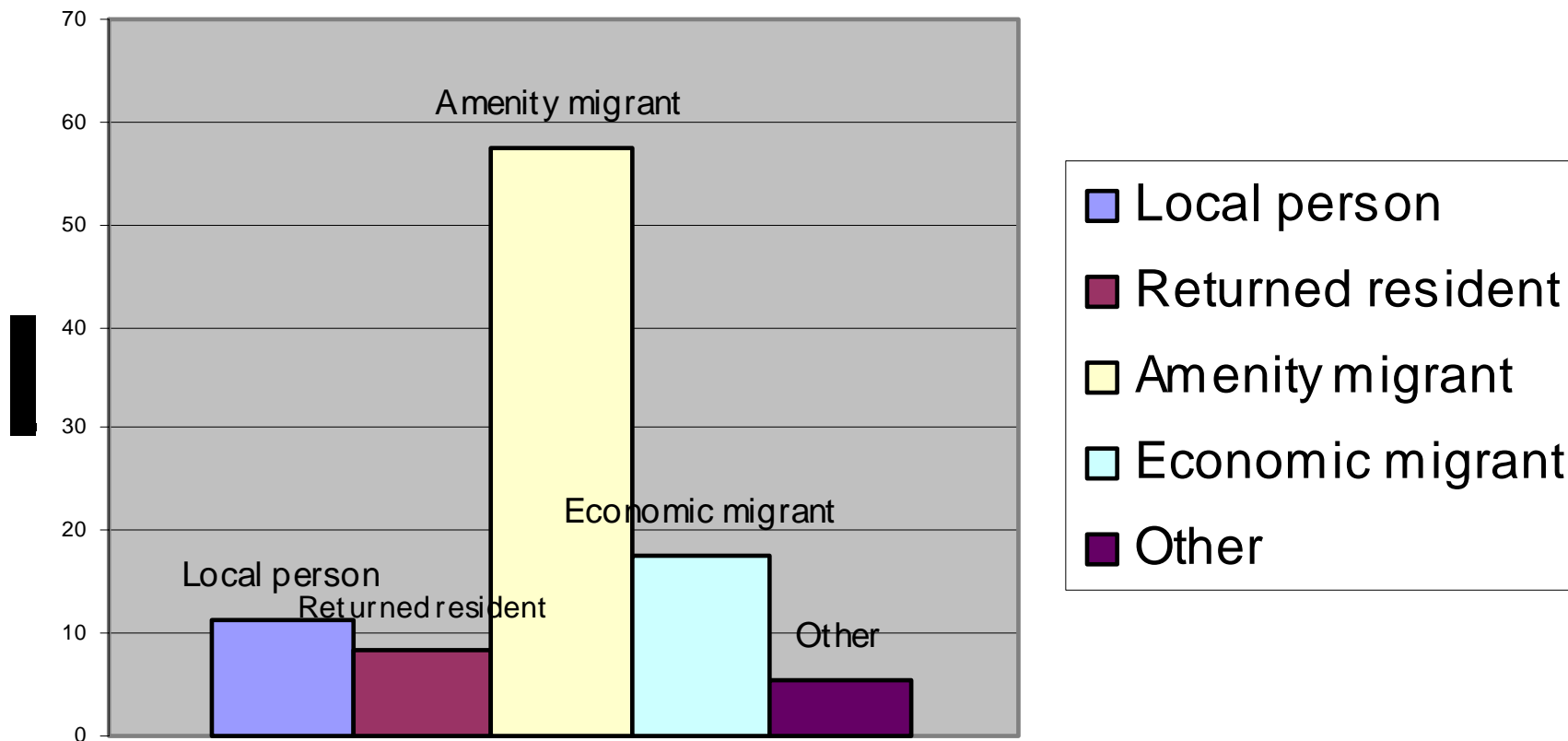
Home Home on the Range





Population by Cohort

Cohort Size



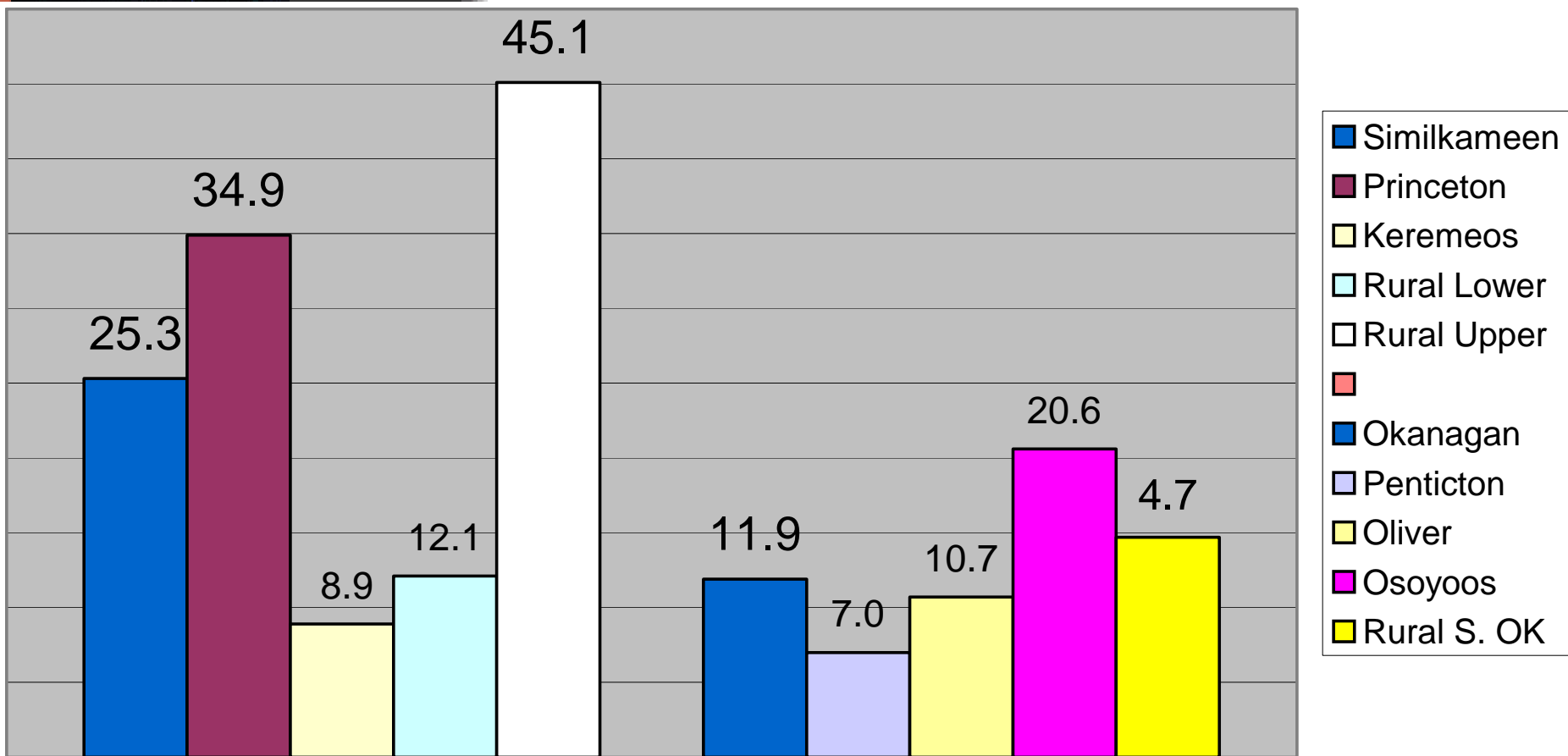


Healthy Landscapes
Healthy Economies
Healthy Communities

RURAL FUTURES

Associates in Rural Community Development

Second Home Frequency





Healthy Landscapes
Healthy Economies
Healthy Communities

RURAL FUTURES

Associates in Rural Community Development

Economic Profiles: Work

	Local	Return	Amenity	Economic	Other	ALL
Employed	33.9	33.3	17.9	38.4	30.8	25.8
Self-employed	24.6	13.7	12.7	21.2	26.9	16.5
Under-employed	0.0	3.9	1.0	0.0	0.0	0.9
Unemployed	0.0	2.0	0.7	2.0	0.0	0.9
Semi-retired	7.7	5.9	11.0	7.1	7.7	9.2
Retired	33.9	41.2	56.7	31.3	34.6	46.6

AM Income Sources

AM Income	Similkameen Valley		S. Okanagan Valley		Both Valleys	
	Frequency	%	Frequency	%	Frequency	%
a) pension	50	42.4	91	34	141	36.5
b) investments	21	17.8	67	25	88	22.8
c) mobile work	11	9.3	20	7.5	31	8.0
d) mobile bus.	6	5.1	22	8.2	28	7.3
e) no plan	17	14.4	40	14.9	57	14.8
f) Other	13	11	28	10.4	41	10.6
Total	118		268		386	



Economic Profiles: Property

- Amenity migrants home and property values were average; returned residents had the most homes over \$500M
- In the Similkameen, AM were less likely (12%) to have replaced an existing home compared to other cohorts (17%). In the S. OK, they were about as frequent (13%).
- AM were about as likely (15%) as other cohorts (17%) to buy vacant property and build a new home.
- No evidence that AMs buy or build larger homes than other cohorts
- More AM live on <math><1/2</math> acre than any other cohort; under represented in all higher property size classes



Social Profile

- In the Similkameen, the % of AM who attended public meetings, public hearings, volunteered or donated was 10-20% lower than other cohorts combined. EM are almost twice as likely to donate money as AM.
- In the S. OK, participation in these social activities is slightly lower: AM participate almost as much actively as other cohorts. Returned residents are most likely to attend public events, least likely to volunteer or donate money.
- Availability of health care is the most important quality of life concern and most likely cause of out-migration. Level of crime is #4.



*Healthy Landscapes
Healthy Economies
Healthy Communities*

RURAL FUTURES

Associates in Rural Community Development

Environmental Profile

- AM are most likely to re-cycle garbage, conserve energy use, avoid use of pesticides, use low-volume toilets, use solar power, use gray water for watering. Local residents are usually the least likely to follow these practices.
- Local residents are most likely to bicycle to work, share rides, own a hybrid and use public transit.
- Returned residents are most likely to use native plants and practice xeriscaping.
- Economic migrants are close to the average in all categories.



*Healthy Landscapes
Healthy Economies
Healthy Communities*

RURAL FUTURES

Associates in Rural Community Development

Profile Summary

- An aged population with 60% amenity migrants most aged
- 53% of AM migrated since 1995, 23% of EM
- Homogenous population in terms of wealth, education, quality of life values, civic responsibility and environmental conservation
- Significant portion of population dependent on pension/investment income or distant client base



Trend Questions

- Coming to the end of a boom era
- Confidence in economy?
- Will energy prices fears effect relocation behaviour?
- Will energy prices effect current AM ability to live in hinterland
- Is the amenity-led settlement pattern a big user of fossil fuels?



*Healthy Landscapes
Healthy Economies
Healthy Communities*

RURAL FUTURES

Associates in Rural Community Development

Planning Questions

- What will happen to all of those 2nd homes?
- Who will buy aged population's homes?
- How will fuel prices/availability effect quality of life: urban vs. rural?
- What are you building now?
- Does your economy have the resilience to regionalize
- Does your population have the skills and will to grow and preserve its own food, change the well pump and retro-fit to home alternative energy use?



Measure, Monitor, Manage

- Energy: audit, plan on 50% FF reduction, develop secure regional sources
- Food: audit, plan and plant for regional consumption
- Build for an energy poor era
- Materials: re-use industries; inventory of redundant structures (2nd homes)
- Resources: audit water, wood, construction minerals
- Is in-migration an industry or an albatross?



*Healthy Landscapes
Healthy Economies
Healthy Communities*

RURAL FUTURES More Information

Associates in Rural Community Development

- www.ruralfutures.ca
- Peak oil tutorial
- Energy economics
- Local economics and Relocalization
- Extreme Scenarios

