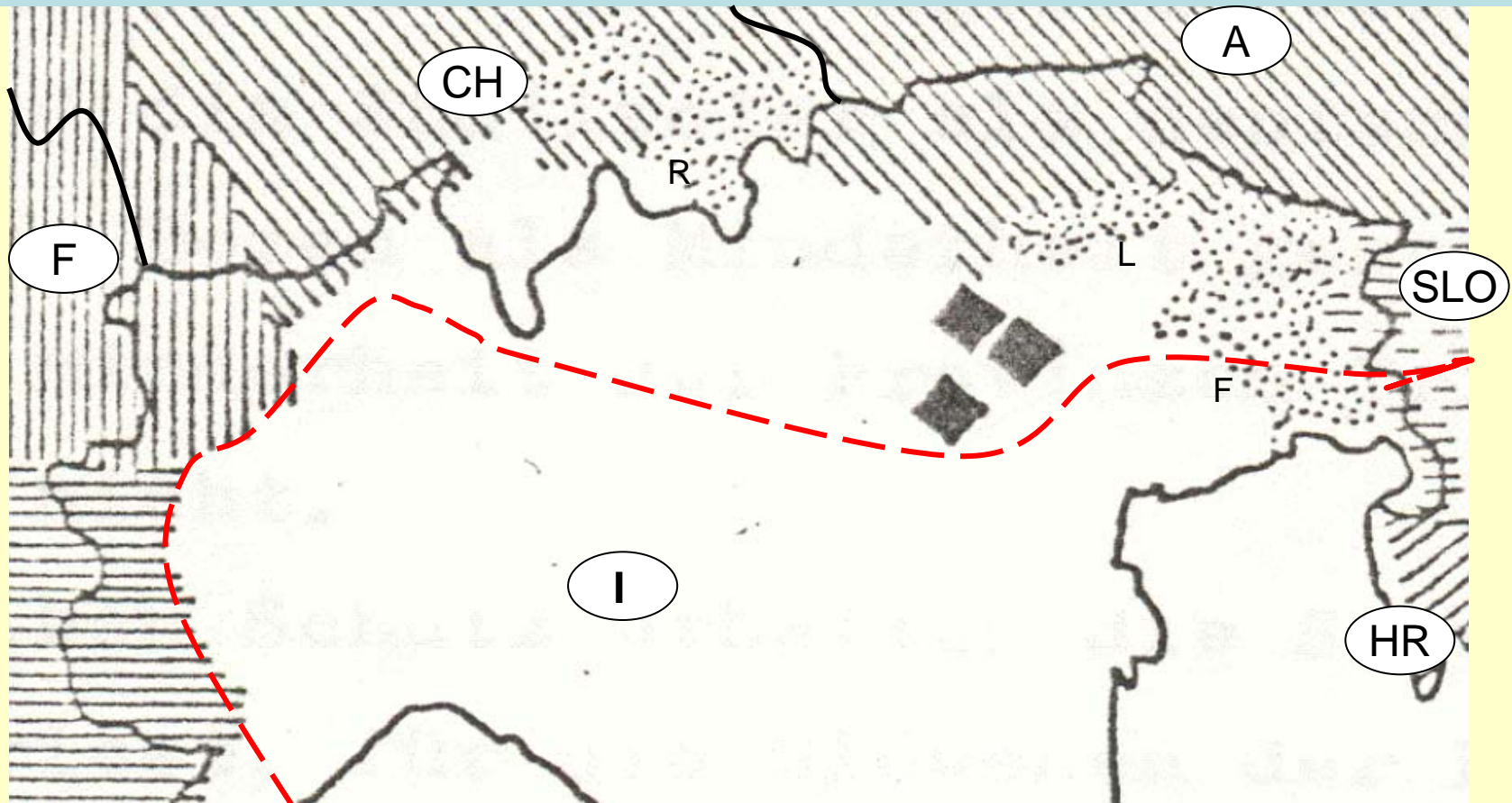
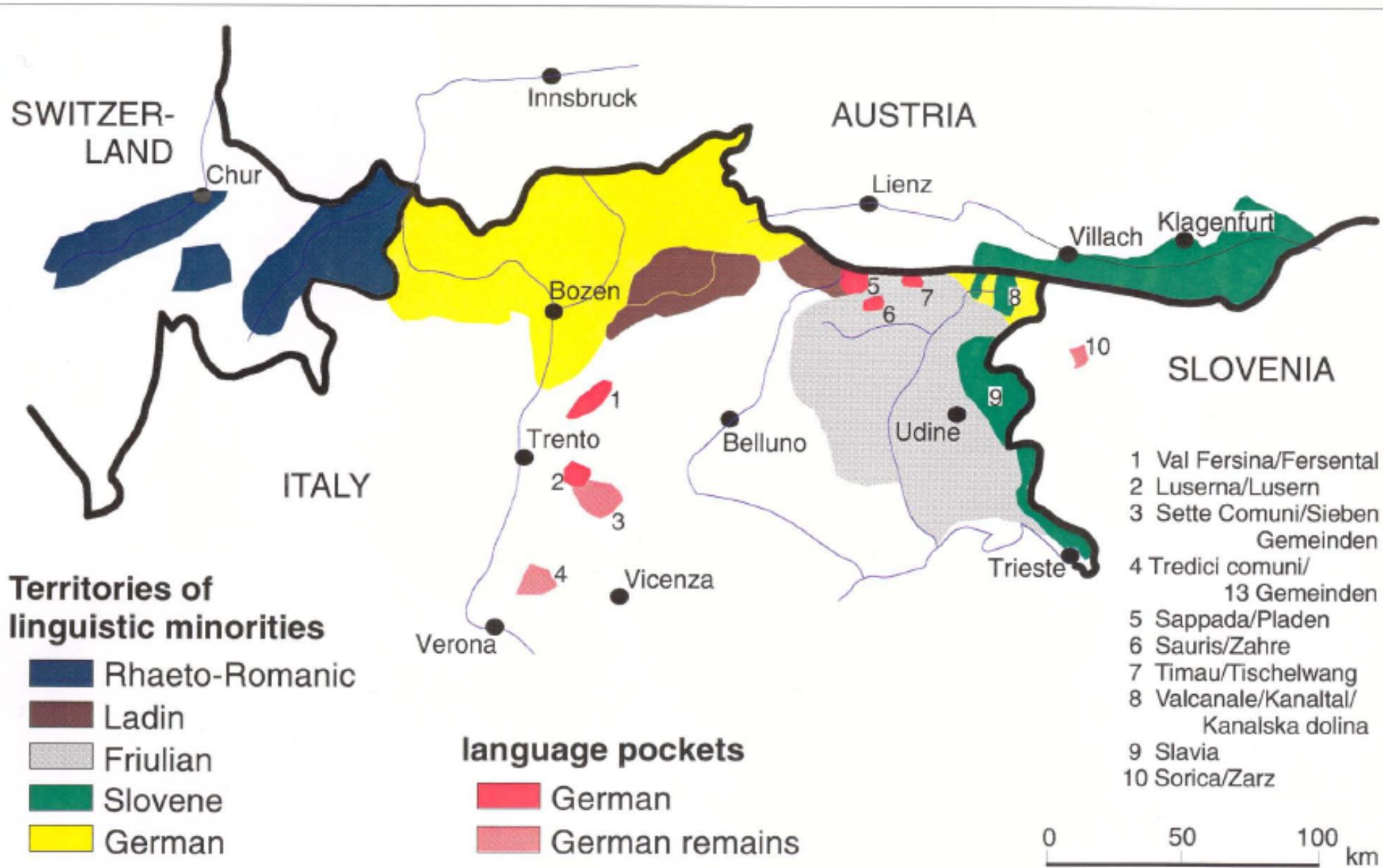


The Effects of Amenity Migration on Ethnic Minorities in the Alps



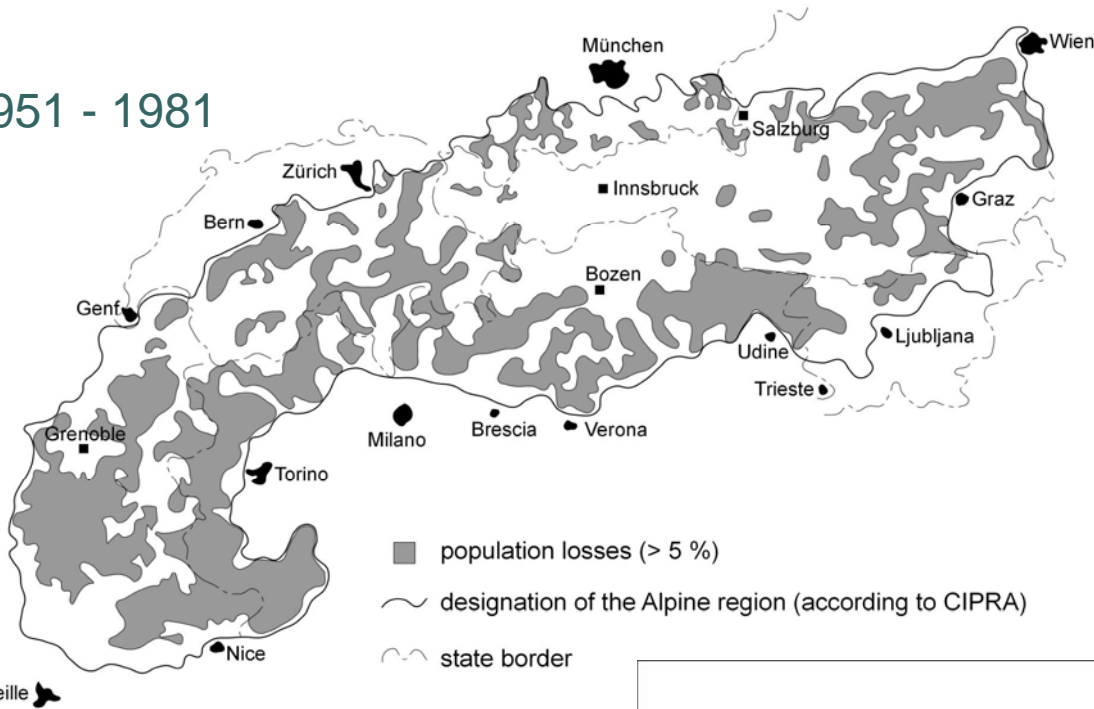
ETHNO-LINGUISTICAL MINORITIES IN THE EASTERN ALPS



Decrease of minority population

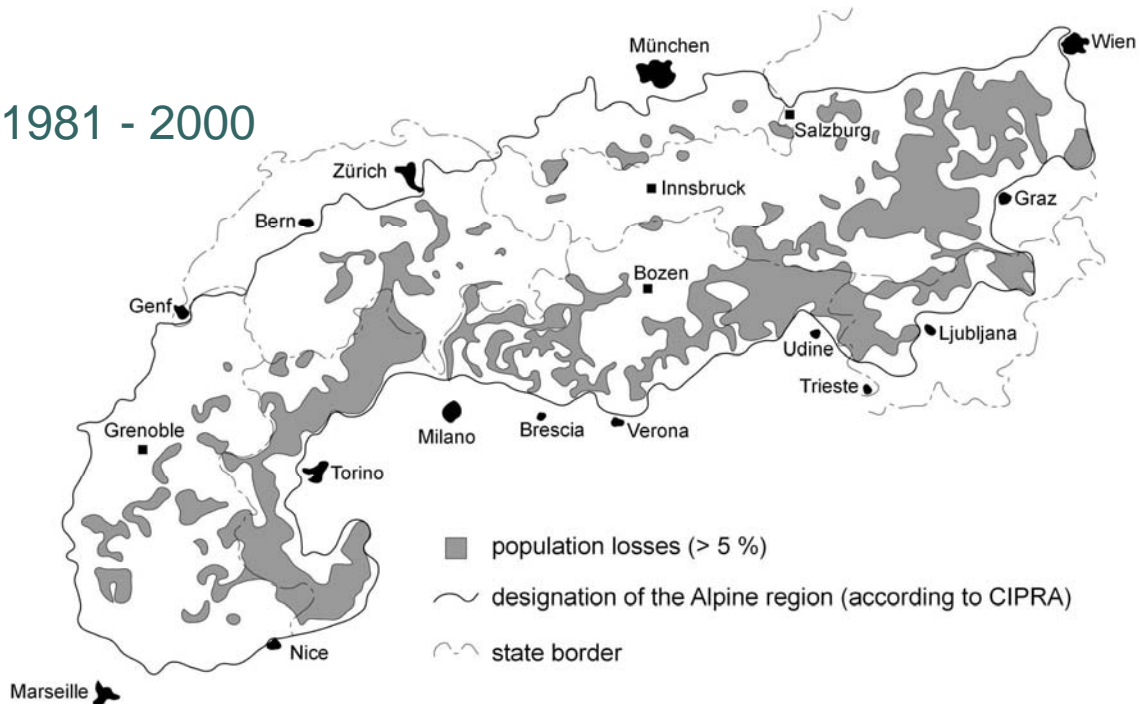
- assimilation to the majority population
- diffuse ethnicity (distinct, subjective factors of ethnicity)
- **demographic development**

1951 - 1981



demographic
problem areas in
the Alpine region

1981 - 2000



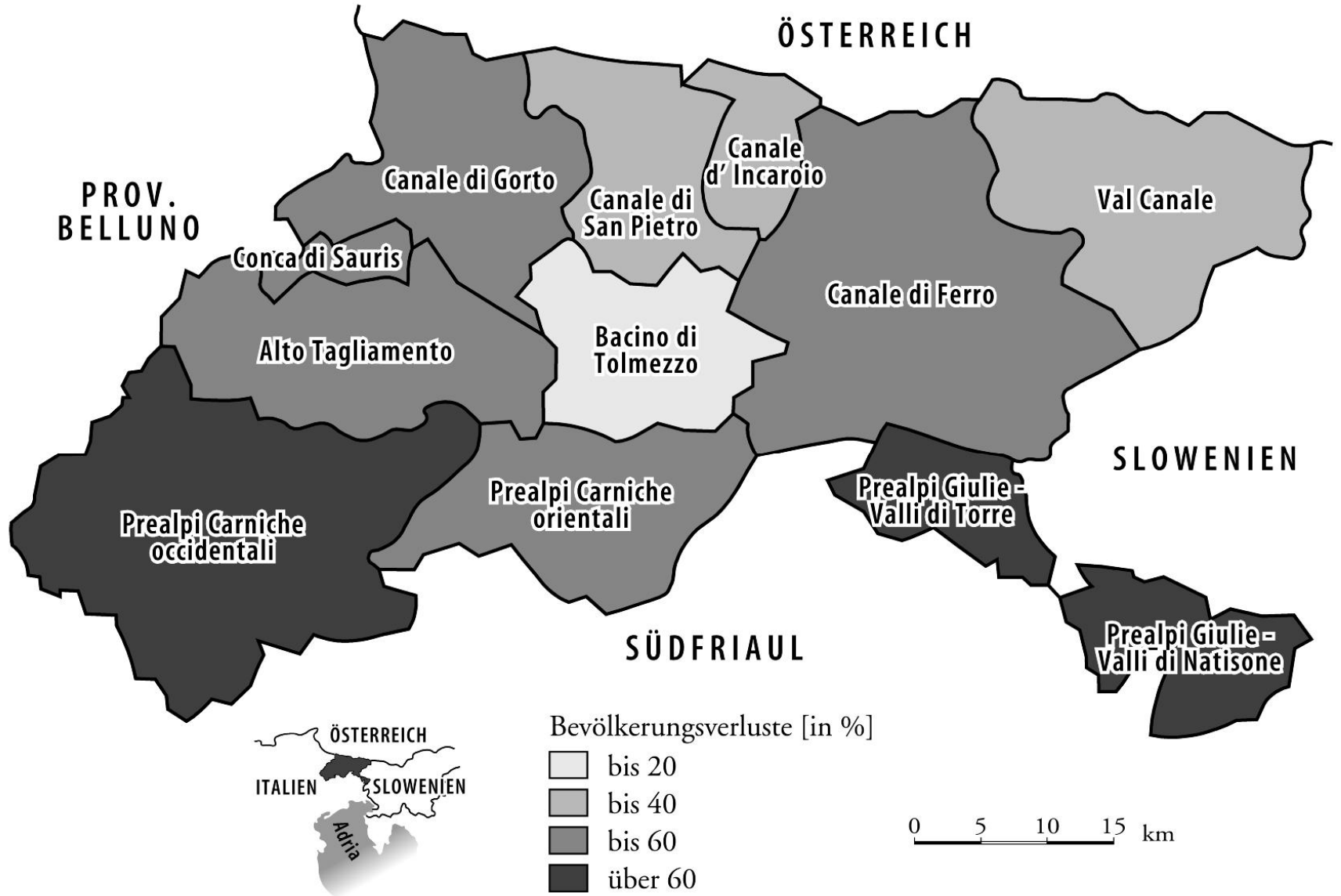
Source: Bätzing (2002),
modified by the author

Thesis 1- the Bio-demographic Dilemma

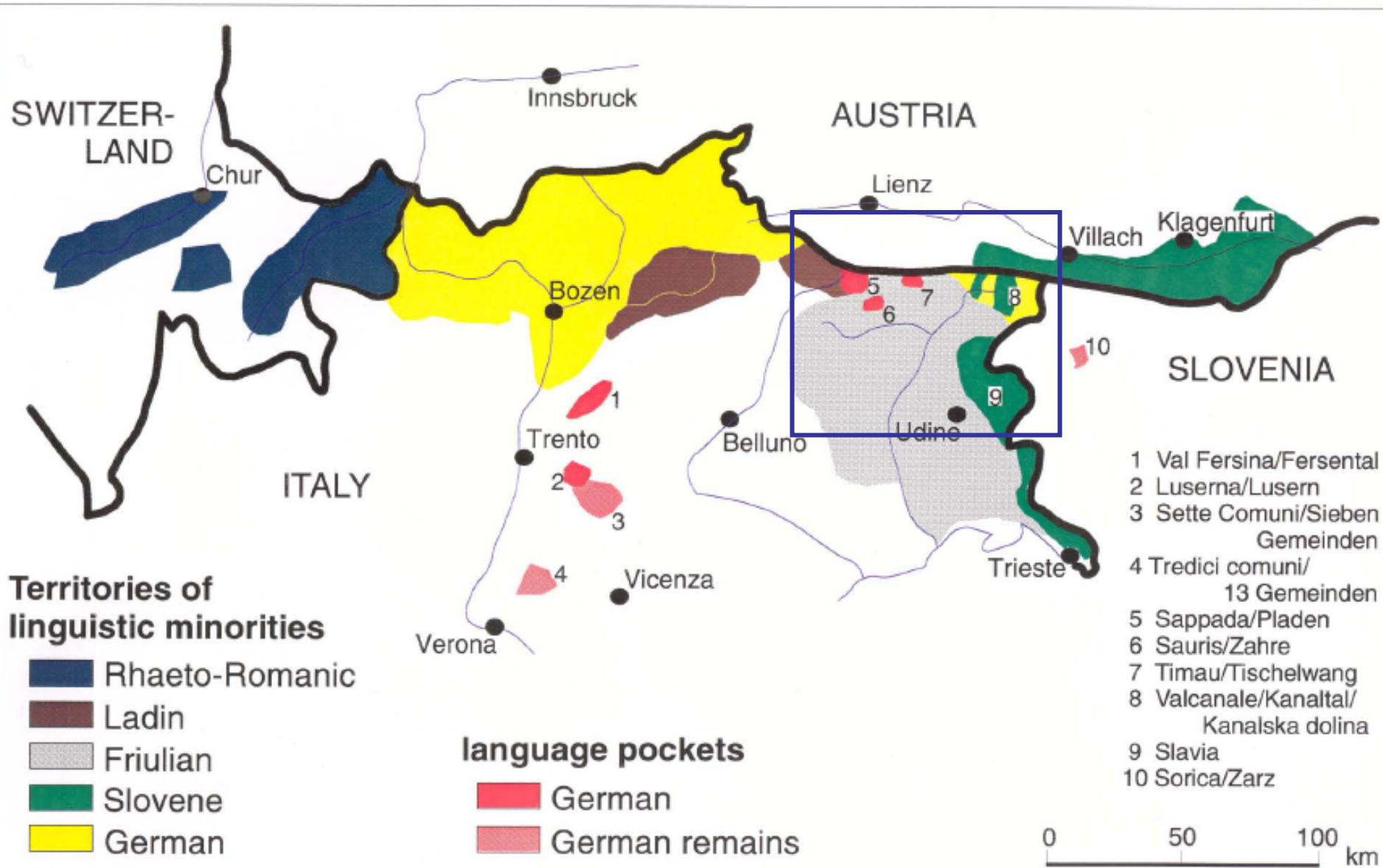
In Alpine areas with population losses the negative migratory balance will no longer be decisive; instead, bio-demographic factors (e.g. high proportion of older people and related birth deficits) will become more relevant.

A core area typifying this development are the Friulian Alps.

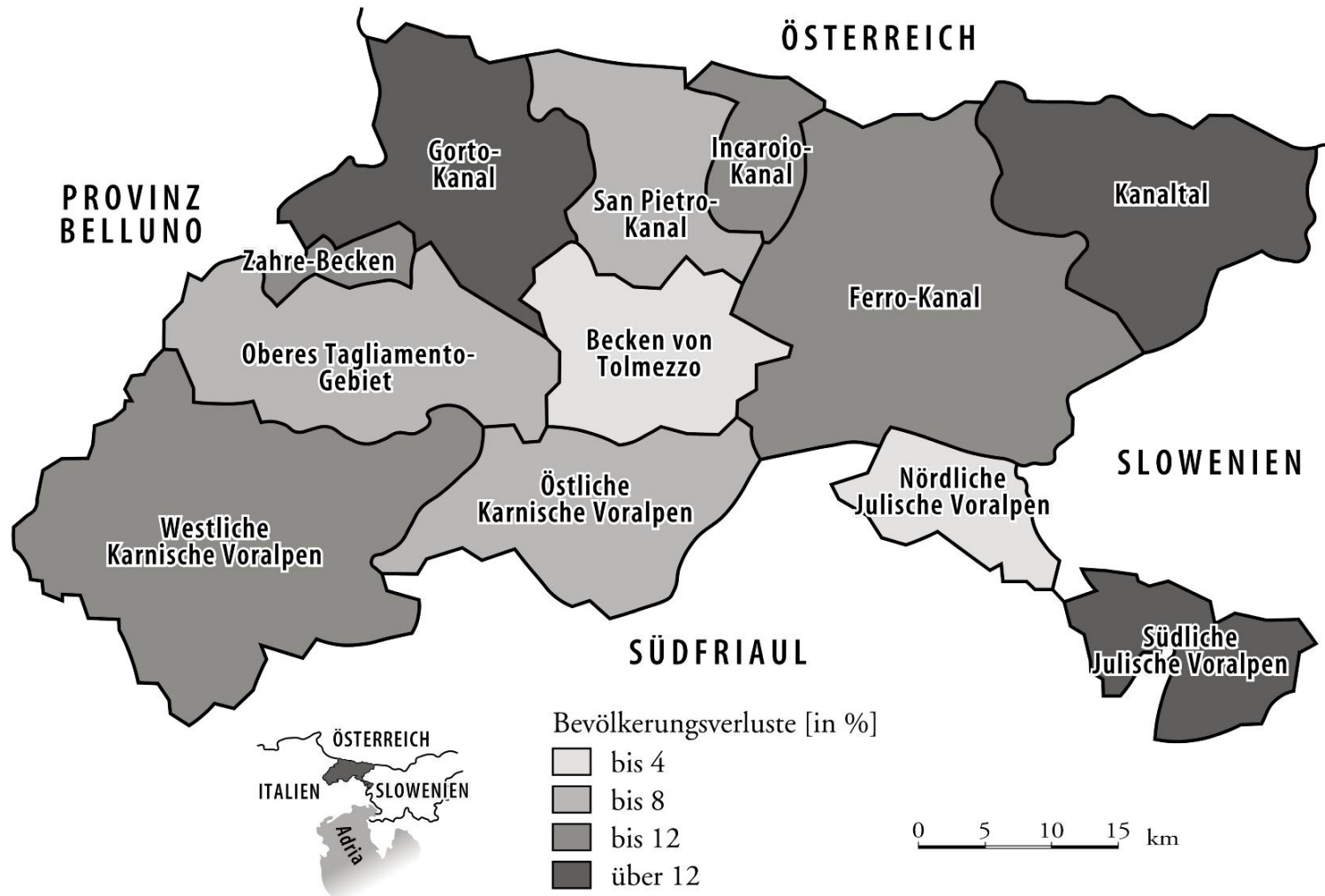
Depopulation in the Friulian Alps 1951 - 2007

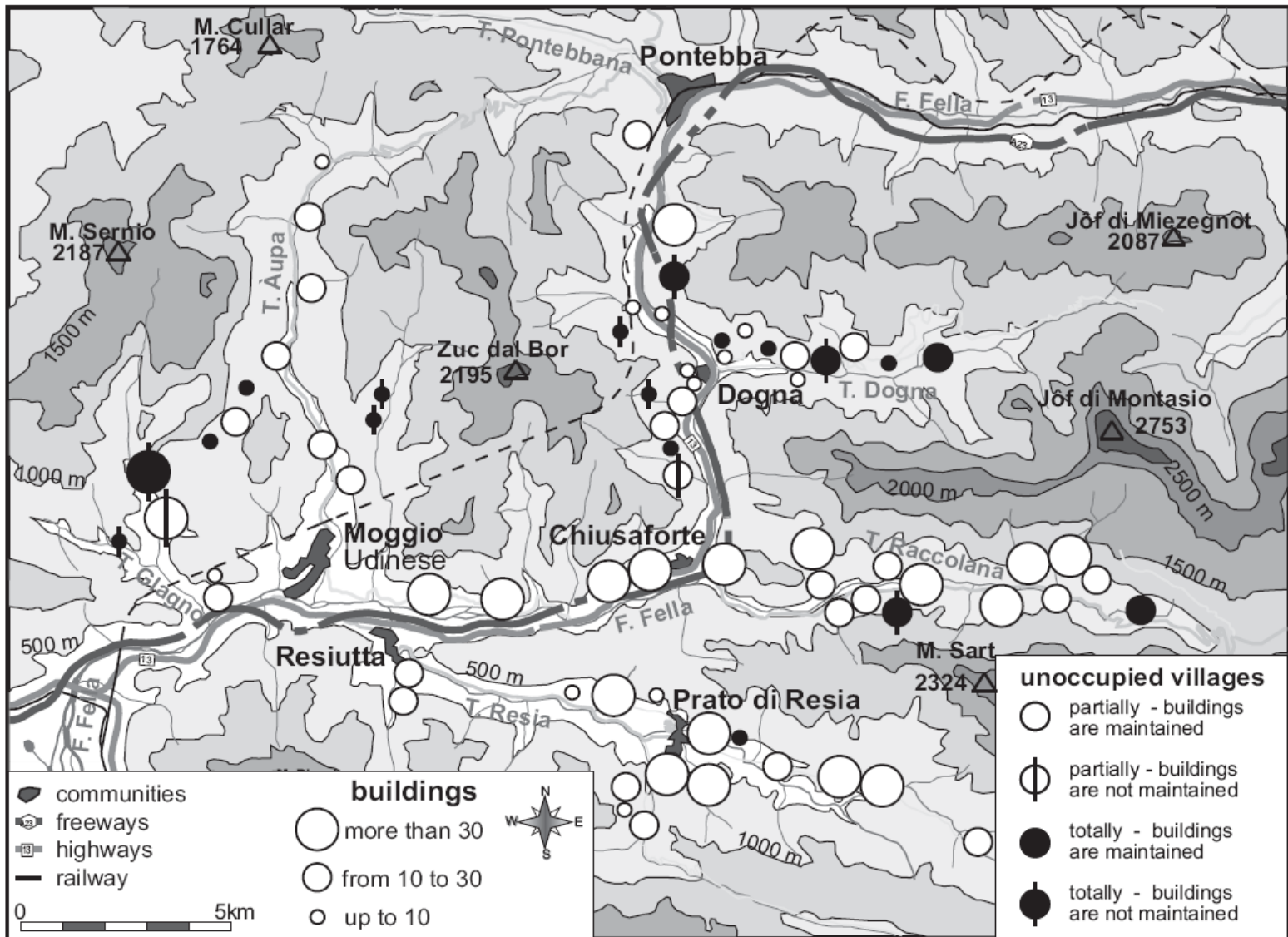


ETHNO-LINGUISTICAL MINORITIES IN THE EASTERN ALPS



Depopulation in the Friulian Alps 1991 - 2007





Abandoned villages in the Friulian Alps 2007

Table 1: Depopulation in the Friulian Alps (1951 – 2006)

Period	Population losses p.a. (%)	Period	Population losses p.a. (%)
1951-06	1,18	1981-91	0,97
1951-61	1,05	1991-01	0,72
1961-71	2,29	2001-06	0,28
1971-81	1,09		

Source: ISTAT 1964; <http://www.demo.istat.it>; calculations by the author

Thesis 2 – Amenity Migration

Consequently, most of the numerous, abandoned Alpine valleys offer themselves as areas for re-settlement. Pull factors for this new process will be amenity migration benefiting from the big and favorable real estate market. The provenances of the newcomers are urbanized areas outside the Alps. This process will change the autochthonous ethnic structure.



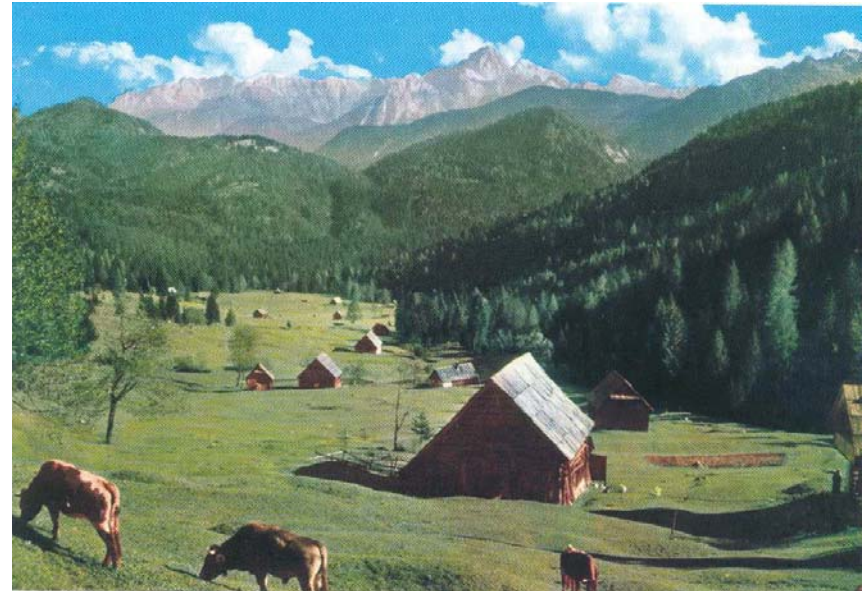
AMENITY MIGRATION

“People moving into the mountains to reside year-round or intermittently, principally because of their actual and perceived environmental quality and cultural differentiation“ (Moss 2003).

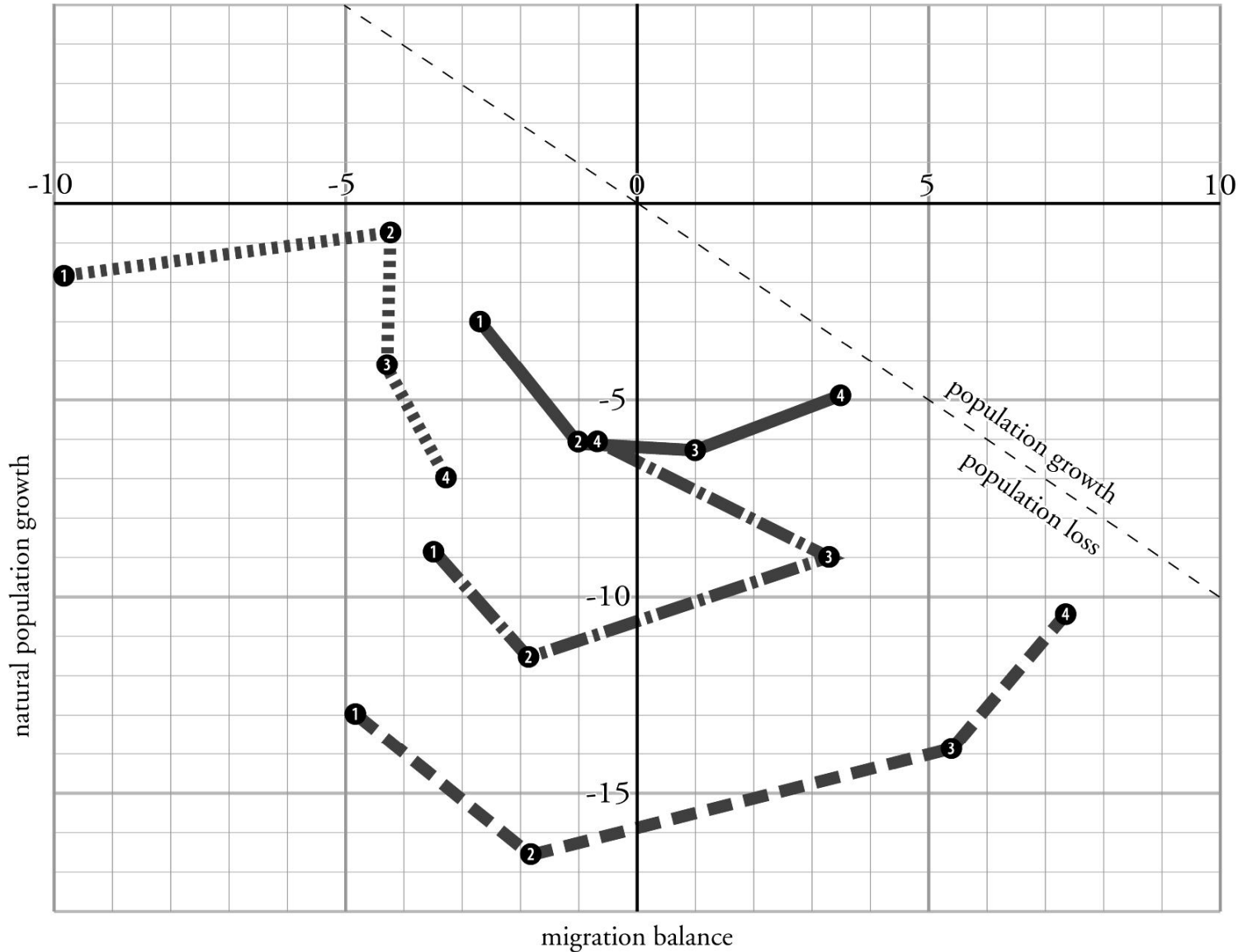
- „urban refugees“
- not tourism-oriented residences
- not exurbanization (outside a daily commuting distance)

patterns of amenity settlements in the Alpine region

- amenity migration → population growth
- amenity migration → unfavorable bio-demographic conditions → stagnation / no population growth



Population balances in the Northern Friulian subregions (Friulian Alps) since 1972 (‰)



- | | | | |
|--|------------------|--|-------------|
| | Carnia | | 1972 - 1981 |
| | zona del Fella | | 1982 - 1991 |
| | Prealpi Giulie | | 1992 - 2001 |
| | Prealpi Carniche | | 2002 - 2006 |